

RUGGED MOBILE SYSTEMS PRODUCTS & NEWS



Celebrating RUGGED MOBILE Systems' 10 Year Anniversary

2017 marks the 10th Year for RUGGED MOBILE Systems.

Since our beginnings in 2007 we have grown into one of the UK's most experienced providers of rugged computing hardware solutions.

We continue to consult with our clients, advising on the right device for their task and we support with installations and design work where required.

In late 2016, we relocated to new offices and expanded our team to ensure our clients achieve the best possible service from us.

We've continued to develop strong relationships with partners needing to integrate robust hardware into their field based or vehicle based systems, including cameras for a range of uses including ANPR solutions. We provide consultation and design capability to these clients.



PRODUCTS CATALOGUE 2017



RUGGED MOBILE Systems for 2017

P2

New Nexcom NVR Series

P3

ISO9001 accreditation

P3

Product Catalogue 2017

P4

Nexcom NVR Series

The new Nexcom NANO Standalone Networking Video Recorder (NVR) for Vehicle & Railway Applications

RUGGED MOBILE Systems, the UK, and Ireland Distribution Partner for Nexcom Inc, are pleased to announce the new NANO series of entry-level standalone video monitoring solutions, specifically designed for vehicle and railway applications.

The NVR NANO 1190 comprises an embedded video management system (VMS), with an integral 4-port PoE switch function, and the ability to live view, record, and also playback stored video data. Designed to be installed

in tough mobile environments, the NANO 1190-C4S has E13 e-mark certification, and the NANO 1190-RAC4SM has EN50155 TX railway certification.

See **Page 3** for further information.



The Intelligent Systems



JUNIPER SYSTEMS

MESA2

PANASONIC

CF-33 Tablet & Detachable Notebook

WELCOME

What rugged technology is on the way for 2017?

Throughout 2016 **RUGGED MOBILE Systems** observed the continued release of further rugged devices available with Microsoft's Windows 10 OS and Android 6.0. Into 2017 we are seeing updates and reiterations to both existing Windows 10 and Android devices.

From 2016 into 2017 we have noted improved capacitive display 'wet touch settings' in particular with the Juniper Systems **Mesa2** capacitive display proving to be the best available 'wet touch setting' performance we've tested plus the Mesa2 is now available running Android! It remains that outdoor users still find digitiser displays significantly out-perform capacitive touch displays in wet work conditions.

There have been many new rugged devices recently launched from both established and new manufacturers. Handheld recently launched their first 8" tablet, the **Algiz 8X** which provides a sleek yet powerful Windows 10 tablet and upgraded their **Algiz 10X** tablet with capacitive touch option. Further to Panasonic's release of the **CF-20** detachable notebook in 2016 this has now been followed up by the larger 12" version, the **CF-33** with 1200NITS brightness digitiser display. Aegex upgraded the **Aegex10 IS**, ATEX Zone 1, tablet which now comes with 128GB SSD and there is now a large 11.6" ATEX Zone 2 tablet available, the **Pad-Ex 01**.

An exciting development for service in 2017 is Getac's announcement that all their products will now come with 3 year **Bumper-to-Bumper Warranty** as standard! This combines standard warranty, pack & collect and accidental damage cover, removing the hassle of arranging couriers, packing devices and accidental damage costs. Getac note this will streamline the whole repair process, keeping your IT downtime to a minimum.

With regards in-vehicle solutions, **Nexcom** have continued to launch new systems, including their new **MVS range** of Modular Vehicle Computer Systems, which gives users the ability to modify and expand existing I/Os by changing and adding pre-defined expansion modules as well as access to the latest Intel i3 and i7 cpu's in a rugged fanless package. They have also released a new mobile **Networking Video Recorder (NVR) series** for Vehicle & Railway Applications as featured on Page 3. **RuggON** have also released a new 12.1" rugged in-vehicle terminal, the **VX-601**.

Now based in Shropshire, year on year we expand our broad customer base, spanning: Oil & Gas, Utilities, Rail, Road and Port Transportation Industries, Local Authorities, Emergency Services, Surveyors, and Automotive Industries and more, both within the UK, Ireland, across Europe and beyond.

NEW PRODUCTS FOR 2017

Juniper Systems | Mesa2 Android Available Spring 2017

The Juniper Systems **Mesa2** fully rugged 7" tablet, running Windows 10, released in 2016 is now available to order running Android 5.1. With the same processor, storage and options as the Mesa2 Windows 10 device. The excellent 'wet touch setting' on the capacitive display, makes the Mesa2 one of the best fully rugged Android devices on the market with regards display response in wet conditions.

Designed for workers in the most extreme environments who require a very robust compact device, with exceptional battery life. The **Mesa2** offers excellent connectivity on a compact yet tough device. With optional 8MP camera, GPS/GNSS, barcode and RFID reader the Mesa2 is a great solution for field workers in a range of environments from surveyors, to field researchers, construction and maintenance staff looking to track assets and record data in the field.



Juniper Systems Mesa2 Key Features:

- Quad Core processor
- Android 5.1 or Windows 10 operating system
- User replaceable high capacity battery (optional internal battery)
- 1.2m drop resistance & IP68 sealing
- Option for 1D/2D barcode scanner & UHF RFID reader, RS232 (Serial) port
- Option for 8MP rear and 2MP front auto focus cameras
- WLAN, Bluetooth and optional 4G LTE connectivity

Panasonic CF-33 Tablet & 2-in-1 Detachable Notebook Available early summer 2017



2017 sees the release of the new Panasonic CF-33 detachable 2-in-1 notebook and a standalone tablet. These high performance devices provide ideal tools for mobile workers, with powerful i5 vPro processors, a 12" (very) high brightness digitiser display, 8GB RAM and 256GB SSD – all as standard. The CF-33 offer a fully rugged device with IP65 rating, 1.2m drop resistance and up to 10 hours battery life with standard (and up to 20 hours with extended) batteries.

Panasonic CF-33 Key Features:

- Intel Core i5-7300U vPro processor
- Windows 10 Pro operating system
- User replaceable 1,990 mAh or 4,120 mAh twin batteries
- 1.2m drop resistance & IP65 sealing
- Configurable port for 2D barcode reader, True Serial port or 2nd USB
- 8MP rear and 2MP front auto focus cameras
- WLAN, Bluetooth (Class 1) & optional 4G LTE connectivity



Mobile NVR NANO 1190 Series for Vehicle and Railway video capture applications

The **NANO 1190** comprises an embedded video management system (VMS), with integral 4-port PoE switch functions, and the ability to live view, record, and playback stored video, in a vehicle based environment. It enables direct installation and provides a turnkey solution ready to power on and start using immediately. The built-in VMS allows the mobile NVR to support ONVIF cameras, and prioritizing content, recording and storage management.

Connection to the integral four PoE ports simplifies installation of cameras, and achieves complete coverage of the whole interior of the vehicle with minimal wiring. Additional cameras can be connected by adding an external switch to fulfil specific applications requirements.

The simplicity and ready-to-use feature of the NANO 1190 extends to the realms of remote monitoring using a web-based user interface to access the device. Live view of up to 9 IP cameras connections can be made available on the driver screen etc. Locations can be recorded in the video data using optional GPS support. 1TB of removable storage can hold a month-long full-HD video, and if more space is required, the NANO 1190 also supports connection to network-attached storage (NAS) through Samba, NFS, and FTP protocols.

The NANO 1190 is designed for in-vehicle usage and tested to MIL-STD-810G for vibration and shock, and has wide operational temperature range of -40°C to 70°C. Recorded data is important and is well protected thanks to the power ignition delay function that guards the system from harmful voltage spikes on vehicle start-up. For railway applications the NANO 1190-RAC4SM has EN50155 certification and supplied with four M12 connectors. For other vehicles the NANO 1190-C4S is E13 e-marked and has four PoE connectors are supplied with RJ45 connectors.

NANO 1190-RAC4SM & NANO 1190-C4S Features Include:

- Standalone NVR (embedded VMS built-in)
- 4 x PoE ports 4ch IP camera 1080p@ 120fps
- Supports Samba/ NFS/ FTP protocols to connect to NAS
- NANO 1190-C4S – CE/FCC/ E13 certified
- NANO 1190-RAC4SM – CE/FCC/EN50155 Tx certified
- Embedded Vehicle Management System built-in
- 802.3at/802.3af (Max 60W) (RJ45 on NANO 1190-C4S. M12 on NANO 1190-RAC4SM)
- 9V-36V DC in
- Supports ONVIF compliant cameras
- 2.5" removable SSD
- Can assign fixed IP address
- Live view, recording & playback simultaneously

Intelligent Traffic Management

The continued demand for more intelligent traffic management and advances in smart vehicles provides many opportunities for new in-vehicle and road-side systems. **RUGGED MOBILE Systems** are a leading provider of the computing hardware for many of these applications, often requiring Automatic Number Plate Recognition (ANPR), advanced video analytics and communications. Many of these solutions are based on powerful standard platforms from Nexcom, customised by **RUGGED MOBILE Systems** to support the exact functions required and to provide the environmental protection demanded. This capability makes **RUGGED MOBILE Systems** the ideal partner for organisations working in areas such as connected cars, autonomous vehicles, advanced analytics and other intelligent transport projects.

RUGGED MOBILE Systems Solutions for Explosive Atmospheres



RUGGED MOBILE Systems offer a broad range of ATEX approved rugged PDA's, Smartphones and Tablet PCs to meet requirements of oil and gas, pharmaceutical, chemical and food industry workers. The updated Aegex10 IS tablet with 128GB SSD was released in late 2016 and early 2017 brought the release of the 11.6" Pad-Ex 01, an ATEX Zone 2, Windows 10 rugged tablet.

We also provide a range of ATEX Zone 2 approved equipment from Panasonic, Getac and Xplore Technologies. For all our ATEX Zone 1 and Zone 2 devices please see Page 14 & 15, of our product catalogue.

New RuggON VX-601

Available Now



RuggON have released a new rugged IP66 rated vehicle-mount PC, the VX-601 with 12.1" high brightness resistive or capacitive display, running an Intel Core i5 processor, with 4GB RAM. The VX-601 excels in connectivity, offering: USB 2.0; USB 3.0; RS232; RS232/422/485; RJ45 Ethernet; CAN bus with J1939 and OBDII support; GPIO; audio; plus both internal and external antennae. With optional 4-port video-in for video surveillance and similar applications. Smart power management with ignition sense and back-up battery makes the VX-601 the ideal solution for many in-vehicle applications.

All-In-One Forklift Truck / In Vehicle/ Cab PC's

www.ruggedmobilesystems.co.uk



Nexcom VMC110/VMC111

7" All-In-One Mobile Data Terminal with ARM® Cortex®-A9 Platform

- 7" TFT LCD Monitor with resistive touch screen
- VMC110 with I/O to back / VMC111 with I/O to bottom
- ARM® Cortex®-A9 Processor with 1GHz frequency
- Compact and fanless design
- On screen F1 ~ F5 function key
- Support Linux and Android system
- Optional: Dead Reckoning Support
- Variety wireless communication options (GPS/ WiFi/ 3G/ LTE)
- Dual CAN bus support and support option OBDII (SAE J1939)
- Wide Range DC input from 9 ~ 36V



Nexcom VMC1100

Compact 7-inch All-in-One Vehicle Computer designed for Truck / n-Cab applications

- Intel® Atom™ Dual Core E3825, 1.33GHz, 1GB RAM and mSATA SSD slot
- 7" WVGA TFT LCD with LED backlight, with anti-glare coating and resistive touch
- Dual CANbus, RS232, USB3.0, RJ-45, GPIO ports, PWM and LAN signal
- Built-in GPS with optional Dead Reckoning support, optional Bluetooth, WLAN and WWAN comms
- Windows 8 Pro, WES8, Windows 7, WES7 or Linux (Fedora, kernel V3.2.0)
- Compact and fanless design, e-marked, truck vibration and shock tested, operating temperature -20°C to 60°C
- Power input: 9-36



Nexcom VMC3XXX & VMC4XXX Series

Powerful fully rugged 10.4" & 12.1" All-in-One Vehicle Mount PC's for Fork Lift Trucks and Construction Vehicles

- Intel® Atom™ D2550 1.86GHz or Intel® Core™ i7 2610UE 1.5GHz up to 4GB RAM and 2.5" SATA SSD and CFAST slots
- VMC3XXX 10.4" TFT LCD 1024x768 pixels (XGA) display, resistive touch screen
- VMC4XXX 12.1" TFT LCD 1024x768 pixels (XGA) display, resistive touch screen
- RS232, USB, Ethernet, Plus CANbus and GPIO ports
- Windows 7 Pro and Windows 7 Embedded, XP Pro and XP Embedded
- IP65, compact and fanless design e-marked, truck vibration and shock tested, operating temperature -30°C to 50°C
- Smart Power Management, Power input: 9-36 VDC



RuggON VM-521 & VX-601

RuggON 10.4" & 12.1" Ultra Rugged Vehicle Mount Computers

- VM-521: Intel Atom 1.91GHz & VX-601: Intel Core i5 2.4GHz Processors
- up to 8GB RAM, SATA SSD and SD slots
- 10.4" 1000NITS & 12.1" 700 or 1200 NITS (both 1024 x 768) XGA display with resistive touch screen
- WLAN ac/abgn, Bluetooth, Optional 4G & GPS with built-in and external antenna
- Giga RJ-45, USB ports plus isolated RS232, CANbus & GPIO
- Windows 10 IoT or Windows 7 Professional Embedded
- IP66 Sealed, operating temperature -30°C to 55°C, tested for Truck Vibration and shock
- VM-521: Wide range isolated 9~32 or 8~60VDC & 2,900mAh UPS backup battery
- VX-601: Wide range isolated 9~60VDC & 4,500mAh UPS backup battery



JLT VERSO+ 10

Demountable 10" rugged Vehicle terminal for ports, warehousing, mining, agriculture & more

- Choice of Intel® Core™ i5 or Intel Atom E3845 Processor's, 8GB RAM, 16GB, 64GB or 128GB industrial grade CFAST SSD
- Projected Capacitive, Multi-Touch 10" XGA LED 400 or 800 NIT brightness screen.
- WLAN 802.11abgn with dual diversity antenna, Bluetooth v2.0 + EDR class 1, WWAN HSPA+, plus GPS in-dock option
- 4 x USB, 1 x RS232 and Giga Ethernet
- Integral UPS for 30 minute battery back-up
- 'Quicklock' demountable fixing arrangement for easy removal and re-fitting
- Windows 10, WES 7 or Windows 7
- Operating temperature -30° C to 55° C, IP65 with optional Roxtec sealing cable protection
- MIL-STD-810G tested for Truck vibration and shock. E-marked
- Power input: 9-36 VDC & UPS internal battery



JLT 1214P & 1214N

Cost effective 12" All-in-One logistics computer from JLT

- Intel® Atom™ D2550 Processor, 4GB DDR3 RAM, 64GB or 128GB CFAST industrial grade storage
- 12.1" XGA LED 500 NIT display (JLT1214P: capacitive & JLT1214N: resistive touch screen)
- WLAN with dual diversity antenna, Bluetooth v2.0+ EDR class 1, plus WWAN and GPS options
- Windows 10, WES 7 or Windows 7
- Operating temperature -30° C to 55° C, IP65 with optional Roxtec sealing cable protection
- MIL-STD-810G tested for Truck vibration and shock. E-marked
- Power input: 18-72 VDC Isolated, or 9-36 VDC Non-isolated



JLT VERSO 12 & 15

The latest generation high performance computers specifically developed for extreme environments

- Intel E3845 Processor, or Intel Core i5-4300U Processor, with 4GB or 8GB DDR3 RAM, 64GB or 128GB CFAST industrial grade storage
- 12.1" and 15" XGA LED 500/800/1000 NIT display options with resistive touch screen
- WLAN 802.11abgn with dual diversity antenna, Bluetooth v2.0 + EDR class 1, WWAN HSPA+
- 4 x USB, 1 x RS232 and Giga Ethernet
- Integral UPS for 30 minute battery back-up
- Windows 10, WES 7 or Windows 7
- Operating temperature -30° C to 55° C, IP65 with optional Roxtec sealing cable protection
- MIL-STD-810G tested for Truck vibration and shock. E-marked
- Power input: 9-36 VDC

In-Vehicle PoE Switch

www.ruggedmobilesystems.co.uk



Nexcom VES30-4S/ VES30-8S

4+1 or 8+1 Gigabit Ethernet Mobile PoE Switch with 4 or 8 Port PoE

- 8 x 10/100/1000 Mbps PoE port (802.3af compliant)
- 15.4W at 48VDC for each PoE port
- Operating temperature -30°C to 70°C
- Fanless, dustproof enclosure
- CE/FCC, E13 mark certification
- Power input: 9 ~ 36VDC

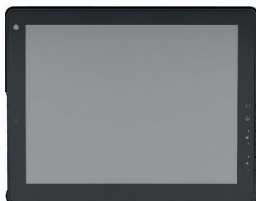
In Vehicle / In Cab Displays



Nexcom VMD1001/ VMD2002 in Vehicle monitor

7" and 8" TFT LCD Monitors with resistive touch screen

- 7" VGA and 8" SVGA TFT LCD monitors, with sunlight-readable touch screens
- 4-wire resistant touch with antiglare coating
- Operating temperature -20°C to 70°C
- VMD2002: USB, VGA interface & integrated power cable plus optional 2MP front camera
- VMD1001 & VMD2000: LVDS interface
- MIL-STD-810G Truck Vibration and Shock tested
- Power input: 9 ~ 36VDC



Nexcom VMD3002 in Vehicle Mount Display

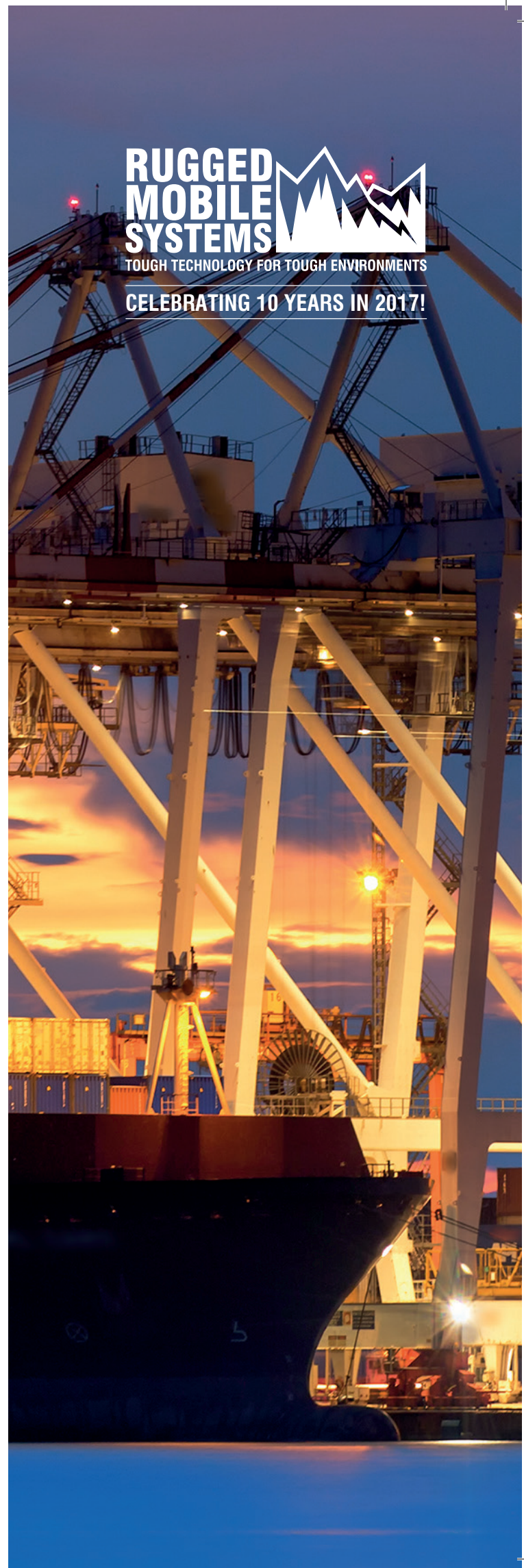
Robust 10.4-inch TFT LCD Monitor with high brightness projected capacitive touchscreen

- 10.4" XGA TFT LCD panel, brightness control, 1200 NIT brightness
- Multiple touch capacitive touchscreen, high performance loud speaker, on screen display buttons x7
- VGA interface
- Operating temperature -30°C to 70°C
- IP65 sealed, MIL-STD-810G Truck Vibration and Shock tested
- Power input: 9~36VDC

**RUGGED
MOBILE
SYSTEMS**

TOUGH TECHNOLOGY FOR TOUGH ENVIRONMENTS

CELEBRATING 10 YEARS IN 2017!



In Vehicle, In Cab & Fixed Mount Systems

www.ruggedmobilesystems.co.uk

**PRODUCTS
CATALOGUE 2017**



Nexcom VTC1020 & VTC1020-PA

Compact, entry level PC for harsh in-vehicle environment

- Intel® Atom™ x5-E3930 Dual Core 1.8GHz up to 8GB RAM and 2.5" SATA SSD drive and mSATA storage
- Integral GPS plus Dead Reckoning option, G-sensor, and built in TPM
- 2 x miniPCIe expansion slots
- WWAN, WLAN and Bluetooth options with external antenna
- CAN 2.0B. Optional OBDII function (SAE J1939/ J1708)
- Windows 10 and Linux
- MIL-STD-810G tested for Truck Vibration and Shock, E-marked, Operating temperature -40° C to 70° C
- Smart power management with 9~36VDC power input and Ignition on/x delay controls
- VTC1020-PA version for Transportation Public Address applications



Nexcom VTC1010

Compact fanless In-Vehicle PC for real-time communication, tracking, mobile surveillance

- Intel® Atom™ processor E3827 ("Bay Trail") 1.75GHz, up to 8GB RAM and 2.5" SATA SSD drive, mSATA and CF slots
- Integral GPS plus Dead Reckoning option, G-sensor, Gyroscope & e-Compass sensors
- 4 x miniPCIe expansion slots
- WLAN and Bluetooth options with external antenna
- CAN 2.0B. Optional OBDII function (SAE J1939/ J1708)
- Windows 8 Professional or Embedded, Windows 7 Professional or Embedded, Linux
- MIL-STD-810G tested for Truck Vibration and Shock, E-marked, Operating temperature -30° C to 70° C
- Smart power management with 9~36VDC power input and Ignition on/x delay controls



Nexcom VTC6200 Series

A family of fanless, flexible, In-Vehicle and Fixed Mount PC systems

- Intel® Atom™ D510 Dual Core 1.66GHz processor, up to 2GB RAM, 2.5" SATA SSD drives
- 2 x miniPCIe expansion slots plus PCI104 slot
- Integral GPS plus Dead Reckoning option
- WWAN, WLAN and Bluetooth options with external antenna
- 4 channel Analog Video input option, plus optional isolated RS232 and GPIO interfaces
- Supports high resolution VGA and LVDS Ports
- Windows XP Pro and Embedded, Windows 7 Pro or Embedded, Linux
- MIL-STD-810G tested for Truck Vibration and Shock, E-marked, Operating temperature -30° C to 70° C
- Smart power management with 9~36VDC power input and Ignition on/x delay controls



VTC6210



VTC6210-R



Nexcom VTC71XX Series

High performance fanless In-Vehicle or Fixed Mount PC systems for demanding applications

- Range of Processor's from Intel Atom D2550, Celeron 847E and i7 Processor's, with up to 8GB RAM, up to 2 x externally accessible 2.5" SATA drive bays and CFAST SSD slot
- 2 x miniPCIe expansion slots plus PCI104 slot
- Integral GPS plus Dead Reckoning option, G-sensor
- WWAN modules with Dual SIM cards, WLAN and Bluetooth options with external antenna
- CAN 2.0B. Optional OBDII function (SAE J1939/ J1708), isolated GPIO and isolated serial ports
- 4 channel Analog Video input option, plus 8 channel PoE option
- Supports high resolution VGA and LVDS display Ports
- Windows 7 Professional or WES7E, Linux
- MIL-STD-810G tested for Truck Vibration and Shock, E-marked, Operating temperature -30° C to 55° C
- Smart power management with 9~36VDC power input and Ignition on/x delay controls



VTC72XX



VTC7220-R

Nexcom VTC6210 & VTC6210-R

Powerful Intel® Quad Core Bay Trail fanless PC for harsh In-Vehicle environments.

- Intel® Atom™ quad core E3845 (Bay Trail), 1.91GHz Processor, up to 8GB RAM, externally accessible 2.5" SATA SSD/HDD drive bay and CFAST SSD slot
- 4 x miniPCIe expansion slots plus PCI104 slot
- Integral GPS plus Dead Reckoning option, G-sensor
- Dual WWAN modules support + 3 x SIM cards, WLAN and Bluetooth options with external antenna
- CAN 2.0B. Optional OBDII function (SAE J1939/ J1708)
- 4 channel Analog Video input option
- Supports high resolution VGA and DP Display Ports
- Windows 8 Professional or WES8, Windows 7 Professional or WES7E, Linux
- MIL-STD-810G tested for Truck Vibration and Shock, E-marked, Operating temperature -30° C to 70° C
- Smart power management with 9~36VDC power input and Ignition on/x delay controls

Nexcom VTC72XX Series

New family of high performance fanless In-Vehicle PCs using Next Generation Intel® Core™ Processor's

- Family based on Intel® Core™ i7-4650U / i5-4300U / i3 4010U processors with up to 16GB RAM, dual externally accessible 2.5" SATA SSD drives, plus CFAST SSD slot.
- 4 x miniPCIe expansion slots
- Integral GPS plus Dead Reckoning option and G-Sensor
- Dual WWAN modules support + 3 x SIM cards, WLAN and Bluetooth options with external antenna
- CAN 2.0B. Optional OBDII function (SAE J1939/ J1708)
- 4 Channel Analog Video input option
- Supports high resolution VGA and DP Display Ports
- Windows 8 Professional or WES8, Windows 7 Professional or WES7E, Linux
- MIL-STD-810G tested for Truck Vibration and Shock, E-marked, Operating temperature -30° C to 70° C
- Smart power management with 9~36VDC power input and Ignition on/x delay controls

Rail EN50155 Approved Computers

www.ruggedmobilesystems.co.uk



Nexcom nROK 5300 & 5500 Series

Powerful Fanless i7 based Rolling Stock Computer with 8 channel PoE and 4 x removable storage drives.

- Intel® Core™ i7 3517UE 1.7GHz, up to 16GB RAM and 4 bays of removable 2.5" SATA drives
- Integral WLAN, 3G/4G/LTE, GPS
- Up to 8 channels Giga Ethernet PoE 802.3af
- Giga Ethernet, RS232/422/485, USB and GPIO ports
- Support for Dual PCI express x8 expansion
- Certified EN50155 for rail on-train usage, -40°C to 70°C
- Windows 7 Pro, Windows 7 Embedded
- 24VDC and 110VDC Power DC Input options, with smart power management



Nexcom NANO 1190 Series

Standalone Networking Video Recorder for Road Vehicle and Railway.

- Standalone NVR (embedded VMS built-in)
- Simultaneous live view, record and playback
- 4 x PoE ports 4ch IP Camera 1080p@120fps
- 802.3at/802.3af (Max. 60W) with M12 connectors for Rail version
- Support ONVIF compliant camera
- Support Samba/NFS/FTP protocols to connect NAS
- Capability of assigning fixed IP address
- 2.5" removable SSD
- Operating temp.: -40°C ~ 70°C
- 9V ~ 36V DC with smart Power management
- CE/FCC/EN50155 Tx certificated

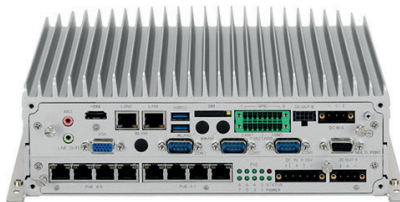


Nexcom nROK 3000

Fanless Intel Atom based IP65 sealed Rolling Stock Computer

- Intel® Atom™ D525Dual Core 1.8GHz, up to 4GB RAM and 2.5" SATA drive.
- Integral WLAN, 3G/4G/LTE, GPS,
- 3 Channels Giga Ethernet with M12 connectors
- RS232 and USB ports
- Support for Dual PCI express x8 expansion
- Certified EN50155 for rail on-train usage, -40°C to 70°C
- Windows 7 Pro, Windows 7 Embedded
- 24VDC and 110VDC Power DC Input options, with smart power management

Modular Vehicle Computer Systems



MVS 52XX & MVS 56XX Series

Modular Vehicle Computers with 8-CH PoE Premium Mobile NVR with powerful analytics Capability for In-Vehicle and Rail environments

- Multiprocessor systems with + NVR + tracker functions
- Vehicle information stamp in video
- 8 x 10/100/1000 Mbps 802.3af PoE ports
- VMS software installed (on MVS5200/5210)
- MVS5200 with Intel® Core™ dual core i3-5010U, 2.1GHz processor
- MVS5210 with Intel Core dual core i7-5650U, 2.2GHz processor
- MVS5600 Compact with Intel® Core™ dual core i3-6100U, 2.3GHz processor
- MVS5603 with Intel Core dual core i7-6600U, 2.6GHz processor
- Dual removable SATA 3.0 SSD/HDD
- 7/24 GNSS tracker function support even PC is off
- Built-in CAN 2.0B. Optional OBDII function (SAE J1939)
- MVS 5210-R is the rail version with EN50155 Class TX conformity

Passenger Information Systems



TPPC 2210 PC & TPD2200 Display

All-in-one Panel PC and up to 8 off Daisy Chained displays on Video over Ethernet

- TPPC 2210 with fanless Intel® Celeron® N2807, 4GB RAM, SATA 2.5" and mSATA storage
- Video over Ethernet Extender (HDBaseT) for driving up to 8 off TPPD 2200 Displays on Cat5e/Cat6 cable
- 21.5" 16:9 LCD with resolutions to 1920 x 1080 (Full HD) with Contrast Ratio: 3000, Brightness:500NIT
- Front bezel compliant with IP54, Tempered glass
- Supports W-Fi, GPS, and 3G module
- Win7/WES7/Win8/WE8S/Win10/Linux
- Wide range DC input from 12~36V
- Mounting: support VESA75/100/200mm

Rugged Notebook & Convertible PC's

www.ruggedmobilesystems.co.uk

**PRODUCTS
CATALOGUE 2017**



Getac S410

Semi-Rugged Windows Notebook

- 14" TFT LCD HD (1366 x 768) or FHD (1920 x 1080) display with optional sunlight readable multi touch.
- Intel Core i3, i5 or i7 (optional vPro) Processor, 4GB to 16GB RAM, choice of 500GB or 1TB HDD, 128GB to 512GB SSD (Two disk bays)
- Comprehensive IO interface with optional Rugged USB 2.0
- BT, WLAN, optional GPS, 4G LTE and pass-through
- Optional: NVIDIA GTX 950M 4GB, PCMCIA, Express Card, Contactless RFID/NFC reader, DVD super multi drive & LED backlit keyboard
- Windows 10 Pro or Windows 7 Professional
- IP52, splash resistant keyboard, MIL-STD-810G, 1.2m drop resistance, sealed ports and connectors, operating temperature -21°C to 60°C
- Li-Ion battery: 4,200mAh, optional 2nd battery



Getac B300

Fully Rugged Windows Notebook

- 13.3" TFT LCD XGA (1024x768) optical pressure sensitive touchscreen with high brightness option
- Choice of Intel® Core i5-6200U (2.3GHz) or i7-6500U (2.5GHz) Processor with Turbo Boost (optional vPro versions), Intel® HD Graphics 520, 4GB to 16GB DDR3 RAM, 500GB SATA HDD (shock-protected)
- Ethernet, WLAN, BT (Class 1) & LTE
- Optional DVD super multi drive, GPS
- Windows 10 Pro or Windows 7 Professional
- IP65, MIL-STD-810G, vibration & drop resistant, optional salt fog compliance & night vision, operating temperature -29°C to 60°C
- Li-ion smart battery: 8,700 mAh (option for 2nd battery in Multimedia Bay)



Getac X500 (X500 Server)

Powerful Ultra-Rugged Windows Notebook

- 15.6" TFT LCD FHD (1920 x 1080) Quadaclear sunlight readable display with multi-touchscreen.
- Choice of Intel® Core i5-520M (2.4GHz) or i7-620M (2.66GHz) vPro Processor with Turbo Boost, Intel HD Graphics 4600 (optional NVIDIA GTX 950M), 8GB to 16GB DDR3 RAM, 500GB or 1TB SATA HDD with optional 2nd up to 1TB SSD drive
- 2 x PCMCIA, 1 x Express Card, DVD super multi drive, optional 3MP Camera, Ethernet, WLAN, BT (Class 2), optional 3G & GPS
- Windows 10 Professional
- IP65, MIL-STD-810G, vibration & drop resistant, optional night vision, operating temperature -20°C to 55°C
- Li-ion Smart battery: 8,700mAh (option for 2nd battery in Multimedia Bay)
- X500 Rugged Server also available with a hardware RAID (redundant array of independent disks) controller to improve performance & protect your data. Up to 5TB. Can be configured for RAID level 0, 1, 5



Getac V110

Thin and lightweight Fully Rugged Notebook to Tablet Convertible PC

- 11.6" TFT LCD HD LumiBond, Quadaclear c11.6" TFT LCD HD LumiBond (1366 x 768) Quadaclear capacitive multi-touchscreen, rotating display (optional multi-touch with digitiser display)
- Choice of 6th Generation Intel Core i5-6200U or i7-6500U (optional vPro) processor with Intel Turbo Boost, 4GB to 16GB RAM, 128GB up to 1TB SSD drive
- HD webcam, Ethernet, WLAN, BT (Class 1), Optional: 4G, GPS & RFID, RF antenna pass-through & rear 8MP Camera
- Windows 7 or 10 Professional
- IP65, MIL-STD-810G, operating temperature of -21°C to 60°C, e4 mark certified for vehicle usage
- Li-ion Dual Smart battery: 2,100 mAh x2 with LifeSupport battery swappable technology



DURABOOK R13S

Fully Rugged Windows Notebook

- 13.3" TFT LCD (1024 x 768) resistive sunlight readable touch panel.
- Intel 6th Generation skylake-U, up to 32GB RAM, 2.5" SATA HDD or SSD
- Comprehensive IO interfaces
- BT, WLAN Dual Band, optional GPS, 3G or 4G LTE
- DVD super multi drive, PCMCIA, Express Card or Smart Card Reader
- Windows 10 Professional
- IP65, MIL-STD-810G & F (Level II), 1.8m drop resistance, operating temperature -30°C to 60°C
- Li-Ion battery: 7,800 mAh, optional hot swap 2nd 3800mAh battery (mutually exclusive with optical disk drive)



Panasonic CF-20

Panasonic CF-20 Fully Rugged Detachable Notebook

- 10.1" WUXGA (1920x 1200) high brightness, capacitive multi touch, glove enabled touchscreen, with IPS outdoor display technology & optional IP55 rated Digitiser
- Intel® Core™ m5-6Y57 vPro™ processor, 8GB RAM, 256GB SSD
- BT (Class 1), WLAN, optional GPS & 4G LTE
- Comprehensive IO Interface on both tablet and keyboard
- Configurable port option for serial, barcode reader or 2nd USB
- Optional: NFC, Fingerprint or Smart Card Reader
- Windows 10 Pro or Windows 7 Professional (Android to come)
- IP65, MIL-STD-810G, 1.2m drop resistance, operating temperature -10°C to 50°C
- Li-Ion battery: 2,600 mAh, plus keyboard base battery



Panasonic CF-33

2-In-1 Detachable 12" Fully Rugged Notebook or Tablet

- 12" QHD IPS LCD display(2160 x 1440)
- 2.6Ghz Intel i5-7300U vPro processor, 8GB RAM, 256GB SSD
- AF 8 Megapixel Camera with Flash LED, WLAN Dual Band, 2x LAN Ports, BT, Optional LTE and GPS/GLONASS.
- Choice of expansion modules 2D BR or Fingerprint or SmartCard Reader or Extended battery
- Windows 10 Pro
- IP65, 1.20m drop tested, operating temperature -29°C to 60°C
- Li-Ion 2x 1990mAh (Standard battery) or 2x 4120mAh (Extended battery)
- Standalone tablet also available



Panasonic CF-31

Semi-Rugged Windows 8.1 Notebook

- 13.1" XGA (TFT) LCD sunlight viewable resistive touchscreen display
- Intel® Core i5-5300U vPro™ Processor (2.3GHz), Intel HD 5000 Graphics, 4GB DDR3 RAM (up to 16GB), 500GB HDD
- PC Card, Express card slots,
- Ethernet, WLAN, BT (Class 1), optional 4G & dedicated GPS
- Windows 7 or 10 Professional
- IP65, MIL-STD-810G, 1.8m drop resistance, operating temperature -10°C to 50°C
- Li-Ion battery: 8,550mAh typical

Rugged Windows Tablets

www.ruggedmobilesystems.co.uk



NQuire ToughTab 8

Rugged Windows 10 Tablet

- 8" (1280 x 800) capacitive display
- Quad Core 1.33GHz Processor, 2GB RAM, 32GB internal (12GB External memory)
- Micro USB, Micro SD,
- BT, WLAN, GPS & 3G
- Optional: 1D/2D barcode reader
- Windows 10 Pro
- IP67, 1.2m drop resistance
- Li-Ion battery: 8,000mAh, not user replaceable



Getac T800

Fully Rugged Windows 10 Tablet

- 8.1" TFT LCD HD Display (1280 x 800) with Getac QuadraClear sunlight readable technology (optional digitiser)
- 1.6GHz Intel Atom x7-Z8700 Processor, 4GB to 8GB RAM, 64GB to 128GB SSD.
- 8MP rear camera, WLAN, BT (Class 1), Optional 4G, GPS, Choice of 1D/2D barcode or contactless HF RFID reader,
- Windows 10
- IP65, 1.8m drop tested, operating temperatures at -21°C to 50°C.
- Li-Ion battery: 4,200mAh



Panasonic FZ-M1

Fully Rugged Compact Windows 10 Tablet

- 7" WXGA outdoor multi-touch capacitive display
- Intel Core m5 6Y57 vPro Processor, 4GB to 8GB RAM, 128G to 256GB SSD
- 8MP Rear Camera, WLAN, BT (Class 1)
- Optional 4G, GPS, barcode reader, HF RFID
- Windows 10 Pro or Windows 7 Professional
- IP65, 1.8m drop resistant
- Li-Ion battery: 3,320mAh, optional hot swap battery
- FZ-M1 Value - lower powered processor model also available



Tetrtab Casepad 8.3" & 10.1" Versions

Rugged Windows 10 Tablets

- 8.1" or 10.1" Transflective TFT LCD High resolution, capacitive Displays (1920 x 1200)
- 2.3GHz Intel Z3795 processor, 2GB RAM, 64GB SSD
- 8MP rear camera with Barcode Reading function, WLAN, BT, 3G or 4G, GPS, NFC reader, flexible mounting and docking options.
- Microsoft Windows 8.1 or 10 (64 bit)
- IP65, 1.0m drop tested (1.8m on MIL-STD case version)
- Heavy duty replaceable battery with 9 hour battery life.
- 4.7" running Android or Windows OS also available



Trimble Kenai

Rugged Windows 10 Tablet

- 10.1" (1920x1200) sunlight readable (1000NITS), capacitive multi-touch display
- Intel Dual Core 1.43GHz E3826 Processor, 4GB to 8GB RAM, 64GB to 256GB SSD
- Serial port as standard
- BT, WLAN, L1 GPS, optional 4G LTE
- 8MP rear camera
- Optional: 1D/2D barcode reader
- Windows 10 Pro
- IP65, MIL-STD-810G, 1.5m drop resistance, operating temperature -30°C to 55°C
- Li-Ion battery: Hot swappable 4,500 or extended 9,100mAh



Juniper Systems – Mesa²

Rugged Compact Windows 10 Tablet

- 7" TFT LCD (1280 x 800) capacitive sunlight readable multi touch.
- Quad Core Intel Atom Processor, 4GB RAM, 64 or 128GB SSD
- USB 3.0, Optional Serial port (IP67 rated)
- BT (Class 1), WLAN, optional GPS, 4G LTE
- 8MP Rear Camera, optional barcode reader & UHF RFID
- Windows 8.1 or Windows 10 Professional (Android 5.1 version also available)
- IP68, MIL-STD-810G, 1.5m drop resistance, operating temperature -20°C to 50°C
- Li-Ion battery with 8 to 10 hrs runtime, optional internal hot swap battery



Handheld ALGIZ 8X

Portable And Powerful Field Computing

- 8" Capacitive Touchscreen (1280 x 800)
- 2.4GHz Intel® N3710 processor, 4GB RAM, 128GB SSD
- AF 8 Megapixel Camera with LED Flash, 4G/LTE, WLAN 802.11ac, BT, GPS/GLONASS, 2x USB 3.0, MiniHDMI
- Windows 10 Enterprise LTSC
- Choice of Barcode Reader, COM or LAN port,
- IP65, 1.22m drop tested, operating temperature -20 °C to 60 °C
- MIL-STD-810G Certified
- Li-Ion 5200mAh battery (ext. 10350mAh)



RuggON Rextorm

PX-501, PX-501B & PM-521

Rugged and Durable Windows 8.1 & 10 Tablets

- 10.1" WUXGA Sunlight readable (1000nit) Capacitive multi-touch, with digitiser (PM-521 digitiser on request).
- 1.9GHz Intel® Core™ i5-4300U (PX-501) or i5-5350U 1.8GHz Processor (PX-501B) or 1.75GHz Intel Atom (PM-521) Processor, Intel HD 4000 graphics, 4GB to 8GB RAM, 120GB to 240GB SSD
- GNSS (GPS), WLAN, BT, Optional 3.5/4G & dual pass-through, 2D Barcode reader, NFC, Smartcard and Mag stripe reader
- RS232 & RJ45 ports, Rear 5MP Camera with autofocus as standard
- Windows Embedded 8.1 Industry, Windows Embedded Standard 7 or 8, Windows 7 Pro, Windows 10 (PX-501B) (PM-521 with Android 4.4 by request).
- IP65, 1.2m shock resistant, MIL-STD-810G, operating temperature -20° to 60°C
- Li-Ion hot-swappable battery: 4500mAh or extended 9,000mAh



Panasonic Toughpad FZ-G1

Fully Rugged Windows Tablet

- 10.1" XGA TFT LCD (1920 x 200) sunlight readable digitiser display
- Intel Core i5-6300U vPro Processor, 4GB to 8GB RAM, 128GB SSD
- Configurable port for Serial, barcode reader, 2nd USB, RJ-45, Micro SD
- BT (Class 1), WLAN, optional GPS, 4G LTE
- 8MP Rear Camera, optional smartcard reader
- Windows 10 Professional
- IP65, MIL-STD-810G, 1.5m drop resistance, operating temperature -20°C to 50°C
- Li-Ion battery with 8 to 10 hrs runtime, optional hot swap bridge battery
- ATEX Zone 2 model due April 2018
- 12.0" CF-33 tablet also available

Rugged Windows Tablets

www.ruggedmobilesystems.co.uk

**PRODUCTS
CATALOGUE 2017**



Xplore Bobcat

Fully Rugged Industrial Windows Tablet

- 10.1" WXGA Rugged IPS LCD, projected capacitive, multi-touch Display (1366 x 768)
- 1.9GHz, Intel® Bay Trail E3845 Quad Core Processor (1.9GHz), 4GB RAM, 128GB to 256GB SSD
- 5MP camera, WLAN, BT, optional 4G, GPS, barcode scanner, NFC, fingerprint scanner
- Windows 7, 8.1 or 10 Professional
- IP65, 1.2m drop resistance to concrete, MIL-STD-810G, operating temperature -34°C to 60°C, Hazardous Location (ATEX Zone 2) Compliant
- Replaceable Li-Ion Battery: 5,300mAh & optional external 4,200mAh battery



Xplore XC6

Ultra Rugged Industrial Windows Tablet PC

- 10.4" Sunlight readable XGA LED IPS, resistive multi-touch Display (1024 x 768)
- 1.7GHz Intel® Core™ i5-4300U (1.9GHz) or i7-4650U Processor, 4GB to 16GB RAM, 128GB to 256GB SSD (RAID capable)
- 5MP camera (barcode capable), WLAN, BT, optional 4G, 2m or sub-meter GPS
- Windows 7 Professional or Windows 8.1 or 10 Pro
- IP67, 1.22m drop tested to concrete (2.13m to plywood), operating temperature -34°C to 60°C, Hazardous Location (ATEX Zone 2) Compliant
- Replaceable Li-Ion Battery: 81.4 WHr



Xplore Xslate B10

Fully Rugged Windows 10 Tablet

- 10.1" WXGA IPS LED (1366 x 768) capacitive touch, with Wacom pen input, display
- Intel Core i5-5350U 1.8GHz Processor, (optional i5-5200 2.2GHz) 8GB RAM, 128GB to 256GB SSD
- 2 x USB 3.0, 1 x True Serial Ready port, 1 x RJ-45 port as standard
- BT, WLAN, GPS & optional 4G LTE
- 8MP Rear Camera, Fingerprint scanner, optional NFC, barcode reader, HDMI Input
- Windows 7 Professional, 8.1 Pro or 10 Pro
- IP65, MIL-STD-810G, 1.5m drop resistance, operating temperature -34°C to 60°C
- Li-Ion battery: 5,300mAh, optional hot swap external battery
- ATEX Zone 2 approval



Handheld Algiz 10X-V2 & V3

Powerful Rugged Tablet PCs

- 10.1" widescreen, high brightness display (10X-V2: resistive touchscreen, 1366x768, 10X-V3: capacitive touchscreen 1920x1200)
- Intel Quad Core 1.83GHz Processor, 4GB RAM, 128GB SSD
- 5MP camera, WLAN, BT, 3G, 4G LTE, GPS
- Windows 7 Ultimate or Windows 10 Enterprise LTSC
- IP65, 1.22m drop tested, Operating temperature -20°C to 60°C
- Hot Swappable Li Ion Battery: 5,300mAh or 10,600mAh



Getac F110

Fully Rugged Windows Tablet PC

- 1.6" TFT LCD HD Capacitive Display (optional dual mode with digitiser)
- Intel Core i5-6200U or i7-6500U (optional vPro) Processors, 4GB to 8GB RAM, 128GB SSD to 1TB SSD
- HD webcam, 8MP rear camera, WLAN, BT (Class 1), optional 4G, GPS, Choice of RFID, 1D/2D imager barcode reader, or choice of ports
- Windows 7 or Windows 10 Pro
- IP65, drop resistant, operating temperature -21°C to 60°C
- Li-Ion dual batteries: 2,160mAh



Getac RX10 & RX10H

Fully Rugged Thin, Ergonomic Windows 10 Tablet

- 10.1" TFT LCD HD (1920 x 1200) capacitive sunlight readable, multi-touch display
- Intel Core M-5Y10c or M-5Y71 vPro processor, 4GB to 8GB RAM, 128GB or 256GB SSD
- HD webcam, 8MP rear camera, WLAN, BT (Class 1), optional 4G LTE (XLTE ready), GPS, Optional 1D/2D imager barcode reader, Fingerprint scanner or RFID reader
- Windows 7 or 10 Professional
- IP65, MIL-STD-810G, vibration & drop resistant, operating temperature -21°C to 55°C
- Hot swappable Li-Ion battery: 2,160 mAh
- RX10H Healthcare Model with easy to clean antimicrobial surface



Motion F5m, C5m & XLSATE R12

Rugged & Portable Semi-Rugged Windows Tablets

Motion F5m & C5m

- 10.4" XGA Standard or VAD with Projective Capacitive Dual-Touch Gorilla Glass display (1024 x 760)
- Intel® Core™ i3, i5 or i7, optional vPro™ Processors, 4GB to 16GB RAM, up to 256GB SSD, C5m Healthcare Model
- 8MP rear camera, WLAN, BT, optional 4G LTE, VGPS, 1D/2D barcode reader & Smart card reader, Windows 7, 8.1 or 10 Pro
- IP54, MIL-STD-810G, 1.2m drop tested, operating temperature -10°C to 55°C
- Hot swappable Li-ion battery: 40WHr

XLSATE R12

- 12.5" Wide Viewing Angle Display, full HD resolution (1920 x 1080), Intel® Core™ i5-6200 or i7-7500 Processor, 4GB or 8GB RAM, 64GB to 256GB SSD
- 8MP rear camera, WLAN, BT, Optional 4G LTE and GPS, Windows 7, 8.1 or 10 Pro
- IP54, MIL-STD-810G, 1.2m drop tested
- Operating temperature -10°C to 50°C
- Hot swappable Li-ion battery: 43WHr



Durabook R11

Fully Rugged yet Slim Windows Tablet PC

- 11.6" TFT LCD HD Capacitive Display (1366x768) (optional digitiser) up to 730NITS
- Intel Haswell i5 or i7 Processors, 4GB to 8GB RAM, 64GB to 256GB SSD
- 5MP rear camera, WLAN, BT (Class 1), optional 4G, GPS, Choice of RFID, 1D/2D imager barcode reader, MSR with SCR
- Windows 7 or Windows 10 Professional
- IP65, drop resistant, operating temperature -10°C to 55°C
- Li-Ion battery: 4,130mAh



Panasonic CF-D1

The fully rugged diagnostic tablet

- 13.3" HD IPS LCD Touchscreen (1366x768)
- 2.4GHz Intel i5-6300U processor, 4GB up to 16GB RAM, 500GB HDD
- 5 Megapixel Camera with Flash LED, 4G, WLAN Dual Band, LAN, BT
- Choice of optional expansion modules: 2nd LAN, 3rd USB 2.0, Rugged 2x USB 2.0
- Windows 7 or 10 Pro
- IP65
- Li-Ion 6200mAh



Panasonic 4K FZ-Y1

The World's first 20" Windows 10 Pro Tablet with 4K resolution display

- 20" IPS 4K High Resolution display with 15:10 aspect ratio, capacitive multi-touchscreen (3840 x 2560)
- 2.3GHz Intel® Core™ i5-5300 vPro™ Processor, Intel HD5500 Graphics, 4GB DDR3 SDRAM (max. 8GB), 256GB SSD
- HD front camera, WLAN, BT (Class 1), Port Replicator connector
- Windows 7 or 10 Pro
- Gravity drop resistance tested to 0.76m
- Built-in Li-Ion battery: 4,770mAh

Rugged Android Tablets

www.ruggedmobilesystems.co.uk



Getac ZX70 (& ZX70-Ex)

Fully Rugged 7" Android Tablet
with glove-enabled touch screen

- 7" IPS TFT LCD (1280x720) sunlight readable capacitive touch screen with glove on
- Intel Atom 1.44GHz Processor, 2GB to
- 8MP Camera, WLAN, Bluetooth, GPS, optional 4G LTE,
- Optional Barcode Reader, RFID/NFC combo reader, UHF RFID and RF pass-through antenna for GPS & 4G
- IP67, 1.8m drop resistant, operating temperature -21°C to 60°C
- Li-Poly Battery: 8,400 mAh (not user replaceable)
- ATEX Approvals: ATEX Zone 2 /22



Panasonic FZ-B2

Fully Rugged Lightweight Android Tablet

- 7" WXGA TFT LCD (1280 x 800) Sunlight readable with Capacitive multi-touch display
- 1.44GHz Intel Atom processor, 2GB RAM, 32GB eMMC Storage
- 5MP rear camera with LED light, WLAN, BT, 4G (supports 3G)
- Configuration Port for optional 2D barcode reader or LAN port
- Business expansion module for optional: hot swap battery, UHF RFID or Smartcard reader
- Android™ 6.0
- IP65, 1.8m drop resistance
- Li-ion replaceable battery: 3,320 mAh



Handheld Algiz RT7

Rugged compact Android 6.0 Tablet

- 7" WSVGA (1024 X 600) capacitive touch display with chemically strengthened glass
- Qualcomm Quad Core 1.2GHz Processor, 2GB RAM, 16GB eMMC (SDHC slot 32GB)
- USB A Host Port, Micro USB, RJ-45 port
- BT (Class 1&2), WLAN, GPS & 3G/4G (Voice & Data), Dual SIM
- 8MP Rear Camera, NFC, optional 2D barcode reader & HF RFID reader
- Android 6.0 (with GMS)
- IP65, raised bezel for LCD protection, 1.2m drop resistance, operating temperature -20°C to 50°C
- Replaceable Li-Ion battery: 6,000 mAh.



Juniper Systems Cedar CT7G

Fully rugged 7" Android 6.0 tablet

- 7" HD IPS display (1280 x 800) MT6735 64-bit quad-core processor, 2GB RAM, Internal storage: 16GB, MicroSD up to 32GB
- 13 Megapixel Camera 4G/LTE (Dual SIM), WLAN, BT, GPS/GLONASS, NFC, PTT
- Android 6.0
- IP68, 0.91m drop tested, operating temperature -10 °C to 50 °C
- Li-Ion 7000mAh battery



Getac MX50

Fully rugged Wearable 5.7" Android Tablet for defense sector

- 5.7" IPS TFT LCD HD (1280 x 720)
- 1.44GHz Intel® Atom™ Z8350 processor, 2GB RAM, eMMC 64GB / 128GB
- 8 MP Camera, WLAN, BT, GPS, 1x MicroUSB OTG
- Android 5.1 with GMS
- Optional Snap Back battery, MIL-STD-461G AC Adapter
- IP67, 1.5m drop tested, operating temperature -21 °C to 60 °C
- MIL-STD-810G Certified
- Li-Ion 4200mAh battery



Getac T800 Android

Rugged compact Android 4.4 Tablet

- 8.1" TFT LCD HD Display (1280 x 800) with Getac QuadraClear sunlight readable technology
- Intel Celeron 1.83GHz Processor, 2GB RAM, 32GB or 64GB SSD
- USB 3.0 Port, Micro-HDMI port
- BT (Class 1&2), WLAN, GPS & 3G/4G (Voice & Data)
- 8MP rear camera, WLAN, BT (Class 1), Optional 1D/2D barcode, serial, micro SD or RJ-45 ports in expansion slot, Optional SnapBack HF RFID/ Smart Card reader
- Android 4.4
- IP65, MIL-STD-810G, 1.8m drop tested, operating temperatures at -21°C to 50°C
- Replaceable Li-ion battery: 4,200 mAh, optional SnapBack Extended battery



RuggON Rextorm PM-521

Rugged and Durable Android tablet

- 10.1" WUXGA Sunlight readable (1920 x 1200)
- 1.75GHz Intel Atom Processor, Intel HD 4000 graphics, 4GB to 8GB RAM, 32GB mSATA SSD
- GNSS (GPS), WLAN (Dual band), BT, Optional 4G/LTE 2D Barcode reader, optional NFC
- USB x 3, RS232 & RJ45 ports, Rear 5MP Camera with AF
- Docking Dual pass-through for WLAN, GPS, WWAN
- Android 4.4 (Windows version also available)
- IP65, 1.5m shock resistant, MIL-STD-810G, operating temperature -20° to 50°C
- Li-ion hot-swappable battery: 4500mAh or extended 9,000mAh



Zebra ET50 & ET55

Rugged Android 5.1 & Windows 10 Tablets

- 8.3" or 10.1" TFT (1920 x 1200) capacitive touch displays with optional active pens
- Intel Quad Core 1.59GHz (Windows or 1.33GHz (Android) Processor, Windows: 4GB RAM, 64GB eMMC Flash, Android: 2GB RAM, 32GB eMMC Flash
- Micro USB 2.0 port, Micro SDXC slot (up to 2TB)
- BT (Class 2), WLAN, GPS & Optional 4G LTE (ET55)
- 8MP Rear Camera, NFC, optional barcode reader via expansion back
- Android 5.1 (Mx) or Windows 10 Pro
- IP65, raised bezel for LCD protection, 1.0m drop resistance (1.8m with frame), operating temperature -0°C to 50°C
- Li-Ion battery (8.3"): 5,900mAh, Li-Ion battery (10.1"): 8700mAh, Optional hot swappable secondary 6,800 mAh battery.



Panasonic FZ-A2

Professional-grade, rugged, reliable Android 6.0 Tablet

- 10.1" WUXGA TFT LCD (1920 x 1200) Sunlight readable, Capacitive multi-touch display
- 1.44GHz Intel Atom processor, 4GB RAM, 32GB eMMC Storage
- 8MP rear camera with LED light, WLAN, BT (Class 1), 4G
- Configuration Port for optional 2D barcode reader
- Business expansion module for optional: hot swap battery or Smartcard reader
- Android™ 6.0
- IP65, 1.2m drop resistance
- Li-ion replaceable battery: 2,720mAh



Xplore Xslate D10

Fully Rugged Android 6.0 Tablet

- 10.1" WUXGA IPS LED (1366 x 768) capacitive touch display with glove touch mode
- Intel Atom QuadCore 1.91GHz Processor, 4GB RAM, 64GB Storage
- RJ-45 port, 2 x USB 3.0 ports, Micro SDXC slot, Micro HDMI out
- BT (Class 2), WLAN, GPS, Optional 4G LTE
- 5MP Rear Camera, NFC, optional 1D/2D barcode reader module, HDMI-input
- Android 6.0 (with GMS)
- IP65, MIL-STD-810G & 461F, 1.5m drop resistance, operating temperature -34oC to 60oC, ATEX Zone 2 approved
- Li-Ion battery: 39.2 Whr battery, Optional Hot Swap 31.1Whr or 59.2 Whr External battery

Rugged Windows & Android Smartphones

www.ruggedmobilesystems.co.uk



Zebra TC8000

Touch Warehouse Mobile Computer

- 4.0" Multi-touch capacitive (840 x 480) multi-touch panel with optional conductive stylus
- 1.7GHz Dual Core processor, 1GB RAM, 4GB to 8GB Flash (optionally 2GB RAM & 16GB Flash)
- Custom IO Connector, Micro SD slot
- 8MP camera, WLAN (enterprise voice roaming), BT, NFC
- 1D/2D barcode imager with innovative scan angle
- Android 4.4.3
- IP65, MIL-STD-810G, 2.4m drop tested, operating temperature -20°C to 50°C
- Li-ion battery: 6700mAh (Hot Swappable)



Zebra TC55

Powerful pocket-sized all Touch Computer

- 4.3". WVGA Blanview® LCD display
- 1.5 GHz Dual Core processor, 1 GB RAM, 8GB Flash.
- 8MP camera, WLAN, BT, 4G, barcode scanning, NFC
- Android 4.1.2 & 4.4.3
- IP67, drop and tumble tested
- Operating temperature -10°C to 50°C
- Replaceable and rechargeable Lithium Ion battery: 2,940 mAh or 4,410 mAh.



Trimble T41

Fully Rugged Handheld Computer

- 4.3" WVGA Sunlight-readable Corning® Gorilla® Glass
- 800MHz or 1 GHz Texas Instruments DM3730 Processor, up to 512MB DDR RAM, 8GB or 16GB Flash
- 8 MP camera with dual LED flash and geo-tagging, WLAN, BT, 3.75G, GPS, optional enhanced GPS, 1D/2D barcode or UHF RFID reader
- Android 4.1 or Windows Embedded Handheld 6.5
- IP65 or IP68, 1.22m drop tested, operating temperature -30°C to 60°C
- Li-ion battery: 3,300 mAh (optional Juice-pack)



Honeywell Dolphin 75E

Powerful and reliable rugged Enterprise Digital Assistant

- 4.3" WVGA Capacitive touch display
- 2.26GHz Qualcomm quad-core processor, 2GB RAM, 16GB Flash
- 8MP camera, WLAN, BT, 1D/2D barcode reader, optional NFC
- Android 4.4.4 or Windows Embedded 8.1 Handheld
- IP67, operating temperature -20°C to 50°C.
- Li-ion battery: Standard 1,670 mAh, Extended 3,340 mAh.



Honeywell Dolphin CT50

Enterprise Ready Mobile Computer

- 4.7" HD Outdoor viewable display with capacitive multi-touch panel
- 2.26GHz Qualcomm Quad Core processor, 2GB RAM, 16GB Flash
- Custom IO Connector, Micro SD slot
- 8MP camera, WLAN, BT, GPS, NFC, Optional 4G LTE & 1D/2D barcode imager
- RS232 or USB Boot, Micro SD/SDHC,
- Windows Embedded 8.1 Handheld or Android 4.4 (Windows 10 and Android 6.0 ready)
- IP67, 1.5m drop tested, operating temperature -20°C to 50 °C,
- Li-ion battery: 4,040 mAh



CAT S60

The World's First Thermal Imaging Smartphone

- Super bright 4.7" a-Si AHVA HD (1280x720)
- Qualcomm MSM8952-3 Octa-Core processor, 3GB RAM, 32GB Flash, MicroSD up to 128GB
- AF 13 Megapixel Camera with FLIR Thermal Camera, 4G/LTE, WLAN, BT, GPS/GLONASS, 1x MicroUSB-OTG, NFC
- Android 6.0
- IP68, 1.8m drop tested, up to 5m waterproof, operating temperature -25 °C to 55 °C
- MIL-STD-810G Certified
- Li-ion battery: 3000mAh
- CAT S40 also available without Thermal Imager



Juniper Systems CT5

4,7" Android Smartphone built to endure

- 4,7" HD IPS display (1280 x 720)
- MTK 6755 Octa-core 2.0 GHz processor, 3GB RAM, Internal storage: 32GB
- 13 Megapixel Camera
- 4G/LTE (Dual SIM), WLAN, BT, GPS/GLONASS, NFC, PTT
- Android 6.0
- IP68, 0.91m drop tested, operating temperature -15 °C to 55 °C
- Li-ion battery: 4500mAh



Handheld NAUTIZ X2

Rugged Mobility Optimized

- 4,7" IPS display(1280 x 720)
- 1.3Ghz Quad Core ARM® Cortex-A53 processor, 1GB RAM, 8GB Flash, MicroSD
- AF 8 Megapixel Camera with Flash LED, 4G/LTE, WLAN Dual Band, BT, GPS/GLONASS, 1x MicroUSB, NFC
- Android 6.0
- IP65, 1.22m drop tested, operating temperature -20 °C to 50 °C
- MIL-STD-810G Certified
- Li-ion battery: 3300mAh

Rugged Windows & Android Smartphones

www.ruggedmobilesystems.co.uk



Panasonic FZ-F1 & FZ-N1

Slim and lightweight handheld with barcode reader

- 4.7" HD display (1280 x 720)
- 2.3Ghz Quad-Core processor, 2GB RAM, 16GB eMMC, Micro SDXC up to 64GB
- 8 Megapixel Camera with Flash LED, 4G/LTE (Dual SIM), WLAN Dual Band, BT, GPS/GLONASS, NFC
- FZ-F1: Windows 10 IoT Enterprise & FZ-N1: Android 5.1.1
- IP67, 1.8m drop tested, operating temperature -10 °C to 50 °C
- MIL-STD-810G Certified
- Li-Ion battery: 3200mAh or 6400mAh with warm swap function



Panasonic FZ X1 & FZ-E1

Fully Rugged handheld tablet with voice & data capability

- 5" 10-point multi touch (1280 x 720) capacitive, daylight viewable display with glove & rain modes
- FZ-E1: 2.3GHz Qualcomm Quad Core Processor
- FZ-X1: 1.7GHz Qualcomm Quad Core Processor
- 2GB RAM, 32GB eMMC Storage
- 8MP Camera, NFC WLAN, BT, GPS, 4G/3G, optional 1D/2D barcode reader,
- FZ-E1: Windows Embedded 8.1 Handheld & FZ-X1: Android 5.1
- IP68, 3.0m drop tested, MIL-STD-810G, operating temperature -20°C to 60°C
- Li-ion battery: 6,200mAh



M3 SM10LTE

Rugged full touch screen with Android or Windows10 lot Mobile

- 5" HD TFT LCD Corning® Gorilla Glass 3® display (1280 x 780)
- 1.3GHz Quad Core Processor, GB RAM, 16GB ROM
- 8MP Camera, WLAN, BT, GPS, 4G LTE,
- Optional 1D/2D barcode reader & UHF RFID trigger handle
- Android 5.1 or Windows 10 lot Mobile
- IP65 with protective boot, 1.2m drop tested (1.8m drop with protective boot), operating temperature -20°C to 60°C
- Li-ion Battery: 4,100 mAh or 6,150 mAh



Bluebird BP30

Fully rugged mobile computer with POS capability

- 5" HD Touch panel (1280 x 720) Corning Gorilla Glass 3
- 1GB RAM, 8GB ROM, Micro SD up to 32GB
- 1D/2D barcode imager, RFID
- AF 8MP camera
- Choice of magnetic stripe reader, Contactless Smart Cards
- Windows Embedded 8.1 Handheld or Android 4.4
- IP67, 1.8m drop tested
- Li-ion battery: 4,500mAh



CASIO IT-G400

Robust and long-lasting mobile Android computer

- 5" HD TFT LCD display (1280 x 720)
- 1.2Ghz Quad Core ARM A53 Processor , 2GB RAM, 16GB ROM
- 8MP Camera, , WLAN, BT, GPS, 4G LTE, 1D/2D barcode reader, RFID, NFC
- Android 6.0 with GMS
- IP65, 1.5m drop tested, operating temperature 0°C to 55°C
- Li-Ion Battery: 5,800mAh



Arbor Gladius GT-500

Enterprise Ready Mobile Computer

- 5"(1280 x 720) capacitive multi-touch display
- 1.3Ghz Quad Core processor, 2GB RAM, 16GB Flash
- Micro USB, Micro SD slot
- 13MP camera, WLAN, BT, GPS, NFC, 4G LTE & 1D/2D barcode reader
- Android 5.1
- IP67, 1.5m drop tested, operating temperature -10°C to 50 °C,
- Li-ion battery: 4,800 mAh



MyPhone HAMMER AXE PRO

Smartphone which is ready for anything

- 5.5" IPS FHD display (1080 x 1920)
- 2.0Ghz Octa-Core processor, 4GB RAM, 64GB Flash, MicroSD up to 32GB
- AF 13 Megapixel Camera with Flash LED, 4G/LTE (Dual SIM), WLAN Dual Band, BT, GPS, NFC, SOS button
- Android 6.0
- IP68, Waterproof USB
- Li-Ion battery: 5000mAh (with fast charging & power bank functions)



Janam XT2

Ultra-rugged 6.1" Android or Windows Smartphone

- 6.1" HD WXGA Capacitive touch display (1280 x 720)
- 1.2Ghz Qualcomm MSM8916 quad-core processor, 1GB/8GB (WLAN) or 2GB/16GB (WWAN)
- 8 MP Camera with AF and LED
- 4G/LTE, WLAN (Dual Band), BT, GPS/GLONASS, NFC
- 1D/2D imager
- Android 5.x or Windows 10 IoT
- MIL-STD 810G Certified
- IP67, 1.5m drop tested, operating temperature -20°C to 60°C
- Li-Ion 3000mAh battery

Rugged Windows & Android PDA's

www.ruggedmobilesystems.co.uk



Casio IT-G500

Robust All-In-One Handheld device

- 4.3" WVGA TFT LCD Display (480 x 800).
- 1.5GHz Processor, 512MB or 1GB RAM, 4GB ROM
- 5MP Camera, 3G, WLAN, BT, RFID, 1D/2D barcode reader, GPS
- Numeric keyboard
- Windows Embedded Handheld 6.5 or Win Embedded Compact 7
- IP67, 1.5m drop tested, operating temperature -20°C to 50°C.
- Li-Ion battery: 1,850mAh or 3,700mAh



M3 OX10(1G)

Multi-functional Industrial PDA

- 3.5" VGA TFT LCD Display (480 x 640).
- 1GHz Processor, 512MB RAM, 4GB ROM
- AF 5MP Camera, 2G/3G, WLAN, BT, RFID, 1D/2D BS, A-GPS, GLONASS
- Choice of Alpha numeric or QWERTY keyboard
- Windows Embedded Handheld 6.5
- IP65, 1.5m drop tested, operating temperature -20°C to 60°C.
- Li-Ion battery: 3,300mAh



Honeywell CN51

Robust Handheld Computing Devices

- 4.0" WVGA TFT LCD resistive, multi-touch display
- 1.5GHz, OMAP Dual Core Processor, 1GB RAM, 16GB Flash & MicroSD Slot
- WLAN, BT, Optional 5MP Camera, 3G, GPS, choice of 2D barcode imagers
- Choice of Windows Embedded Handheld 6.5 or Android 6.0 (with GMS)
- IP64, 1.5m drop resistance, operating temperature -10°C to 50°C
- Li-Ion removable battery: 3,920mAh



Handheld Nautiz X4

Fully Rugged Handheld

- 3.5" VGA High Brightness, resistive Display
- 1GHz Texas Instruments AM3703 Processor, 512MB RAM, 1GB Flash.
- 5 Megapixel camera, WLAN, BT, 3.8G, GPS, 1D laser scanner or 2D Imager
- Windows Embedded Handheld 6.5 Professional with Office Mobile
- IP65, 1.22m drop tested, operating temperature -20°C to 55 °C
- Li-Ion battery: 4,000mAh



Handheld Nautiz X8

Fully Rugged Handheld

- 4.7" FWVGA (854 x 480) High Brightness, Asahi Dragontail strengthened glass capacitive Display
- 1.5GHz Texas Instruments 4470 Dual Core Processor, 1GB RAM, 4GB INAND Flash
- 8MP camera, WLAN, BT, GPS, optional 3.8G
- Windows Embedded Handheld 6.5.3 or Android 4.2.2
- IP67, 1.22m drop tested, MIL-STD-810G, operating temperature -30°C to 60°C
- Li-Ion battery: 5,200mAh



Getac PS336

Fully Rugged Handheld

- 3.5" TFT LCD VGA 600nits with Blauview Technology Display
- 1GHz TI AM3715 Processor, 256MB NAND flash, 8GB INAND.
- 5MP autofocus camera, WLAN, BT, GPS
- IOptional 3.5G, Optional FlexiConn: 1D laser barcode reader; HF RFID, 3-in-1 Card Reader or Long Range Bluetooth
- Windows® Embedded Handheld 6.5 Professional or Classic
- IP68, 1.82m drop tested, operating temperature -30°C to 60°C
- Li-Ion smart battery: 5,600mAh



Zebra Workabout Pro 4

Rugged PDA for the mobile worker

- 3.7" VGA/QVGA display
- 1GHz, Sitara ARM Cortex A8 Processor, 512MB RAM, 4GB Flash ROM
- 8MP Camera, WLAN, BT, Optional 3G, GPS, range of 1D laser or imager barcode scanners, LF, UHF or HF RFID modules
- Microsoft Windows Embedded CE6.0 or Windows Embedded Handheld 6.5
- IP65, 1.5m drop tested, operating temperature -20°C to 50°C
- Li-Ion battery: 2,760mAh or 4,400mAh



Janam XM5

Rugged Mobile Computer

- 3.5" VGA TFT LCD resistive display.
- 1GHz ARM Cortex-A8 processor, 512MB RAM, 1GB ROM & MicroSD slot
- 5MP Auto focus Camera, WLAN, BT, 3G, GPS, 2D barcode imager or scanner
- Windows Embedded Handheld 6.5 or Android 4.2
- IP65, 1.5m drop tested, operating temperature -20°C to 60°C
- Li-Ion battery: 4,000mAh
- Numeric or Qwerty keypad



Trimble Nomad 1050 & Ranger 3 Series

Outdoor Rugged Handheld Computer

- Trimble Nomad 1050
- 3.5" Full VGA Sunlight readable, resistive touchscreen
- 1GHz Texas Instruments processor, 512MB SDRAM, 8GB Flash
- 5MP camera, WLAN, BT, GPS, Optional 3.75G & 1D/2D barcode imager & UHF RFID.
- RS232 or USB Boot, Micro SD/SDHC, Windows Embedded Handheld 6.5 Professional
- IP68, 1.2m drop tested, operating temperature -30°C to 60 °C, Li-Ion battery: 5,200mAh

- Trimble Nomad 1050
- 4.2" VGA TFT Sunlight readable resistive touchscreen plus Qwerty keypad with number pad
- 800MHz Sitara ARM Cortex-A8 processor, 256MB RAM, 8GB Flash
- WLAN, BT, GPS, Optional 5MP camera, 3G, 1D barcode scanner, Windows Mobile 6.5 Professional
- IP67, 1.22m drop tested, operating temperature -30°C to 60 °C, Li-Ion battery: 2,500mAh battery: 5,200mAh



Gen2Wave RP1600

Compact & Lightweight Rugged Handheld

- 4.3" WVGA (800 x 480)
- 1.8GHz Octa-Core Samsung Exynos Processor 3GB RAM, 16GB ROM, MicroSD up to 32GB
- AF 13MP camera, 4G/LTE, WLAN, BT, A-GPS
- 1D/2D barcode scanner
- Android 4.4 (upgradable to 6.0)
- IP64, 1.5m drop tested, Operating temperature -20°C to 60°C
- Li-Ion battery: choice of 1,860 / 2,860 / 4,000mAh plus 200mAh backup battery

Windows ATEX Certified Rugged Mobile Hardware



i.roc Ci70-Ex ATEX Zone 1/21, Windows PDA

Rugged ATEX Zone 1/21 PDA
with flexible end cap options

- 3.5 inches VGA (640 x 480 pixels) screen with Gorilla Glass & backlight
- 1GHz OMAP Multi Core Processor, 512MB RAM and 1GB Flash
- WLAN 802.11a/b/g/n, Bluetooth 2.1, WWAN 3G UMTS plus IrDA infra-red interface
- A-GPS and accelerometer
- Options for 2D imager, 1D laser scanner LF, HF and UHF RFID
- Windows Embedded Handheld 6.5.
- Li-Ion Battery: 3.7 V, 4,000 mAh
- IP65, 1.2m drop tested, Operating temperature -20°C to 50°C
- ATEX Approvals: IIC ia IIC T4 Gb IP64, IID ia IIC T135°C Db IP6X Mining Approval: I M1 Ex ia 1M



CN70X ATEX Zone 2/22, Windows PDA

Intermec CN70A ATEX and CN70E ATEX Ultra-Rugged Mobile Computers for field-mobility applications

- 3.5 inches VGA (640 x 480 pixels) screen with Gorilla Glass & backlight
- TI 1GHz OMAP Processor, 512MB RAM and 1GB Flash
- WLAN 802.11a/b/g/n, Bluetooth 2.1, WWAN 3G UMTS/HSPA+
- A-GPS and accelerometer, 5MP Camera
- 2D imager and UHF RFID
- Windows Embedded Handheld 6.5.
- Li-Ion Battery: 3.7 V, 4,000 mAh
- IP67, 12.4m drop tested, Operating temperature -20°C to 50°C
- ATEX Approvals: II 3G Ex ic IIC T4 Gc, II 3D Ex ic IIIB T130°C Dc



Getac PS336-Ex ATEX ZONE 2/22, Windows PDA

Highly versatile ATEX Zone 2/22 fully rugged handheld with FlexiConn interface

- 3.5" TFT LCD VGA (640 x 480) 600nits with Blanview Technology Display
- 1GHz TI AM3715 Processor, 256MB NAND flash, 8GB iNAND.
- 5MP autofocus camera, WLAN, BT, GPS Optional 3.5G, Optional FlexiConn: 1D laser barcode reader; HF RFID, 3-in-1 Card Reader or Long Range Bluetooth
- Windows® Embedded Handheld 6.5 Professional or Classic
- IP68, 1.82m drop tested, operating temperature -30°C to 60°C
- Li-Ion smart battery: 5,600mAh
- ATEX Approvals: II 3G Ex ic IIC T4, II 3DII 3D



Getac T800-Ex 8.1" ATEX Zone 2/22, Windows 10 Tablet

Fully Rugged Compact 8" tablet

- 8.1" TFT LCD HD Display (1280 x 800) with Getac QuadraClear sunlight readable technology
- 1.6GHz Intel Atom X7-Z8700 Processor, 4GB to 8GB RAM, 64GB to 128GB SSD.
- 8MP rear camera, WLAN, BT (Class 1), Optional 4G, GPS, 1D/2D barcode reader
- Windows 10 Professional
- IP65, 1.8m drop tested, operating temperatures at -21°C to 50°C
- Li-ion battery: 4,200mAh
- ATEX zone 2/22



aegex10 IS 10.1" ATEX Zone 1, Windows 10 Tablet

First ATEX IECEx Zone 1 Windows tablet

- 10.1" AHVA (1920 x 1200) Full HD Plus, capacitive multi-touch display (supports glove touch)
- 2.3GHz Intel Quad Core Atom Processor, 4GB RAM, 128GB SSD Storage
- 8MP rear camera, WLAN, BT, GPS, NFC, Optional 4G LTE
- Full size USB 2.0, Micro USB for charging, Micro SDXC slot (to 2TB)
- Windows 10 Professional (supports Windows 8.1)
- IP65, MIL-STD-801G, 1m drop resistant



Xplore Bobcat 10.1" ATEX Zone 2, Windows 10 Tablet

Fully Rugged Industrial, Zone 2, Windows Tablet

- 10.1" WXGA Rugged IPS (1366 x 768) LCD, projected capacitive, multi-touch Display
- 1.9GHz, Intel® Bay Trail E3845 Quad Core Processor (1.9GHz), 4GB RAM, 128GB to 256GB SSD
- 5MP camera, WLAN, BT, optional 4G, GPS, barcode scanner, NFC, fingerprint scanner
- Windows 7, 8.1 or 10 Professional
- IP65, 1.2m drop resistance to concrete, MILS-STD-810G, operating temperature -20°C to 60°C



Xplore Xsplate B10 10.1" ATEX Zone 2, Windows 10 Tablet

Fully Rugged Windows 10 Tablet

- 10.1" WXGA IPS LED (1366 x 768) capacitive touch, with Wacom digitiser pen input, display
- Intel Core i5-5350U 1.8GHz Processor, (optional i5-5200 2.2GHz) 8GB RAM, 128GB to 256GB SSD
- 2 x USB 3.0, 1 x True Serial Ready port, 1 x RJ-45 port as standard
- BT, WLAN, GPS & optional 4G LTE
- 8MP Rear Camera, Fingerprint scanner, optional NFC, barcode reader, HDMI Input
- Windows 7 Professional, 8.1 Pro or 10 Pro
- IP65, MIL-STD-810G, 1.5m drop resistance, operating temperature -34°C to 60°C
- Li-Ion battery: 5,300mAh, optional hot swap external battery
- ATEX Zone 2 approval



Xplore XC6 10.4" ATEX Zone 2, Windows 10 Tablet

Fully Rugged Industrial Windows 10 Tablet PC

- 10.4" Sunlight readable XGA LED IPS, resistive multi-touch Display (1024 x 768)
- 1.7GHz Intel® Core™ i5-4300U (1.9GHz) or i7-4650U Processor, 4GB to 16GB RAM, 128GB to 256GB SSD (RAID capable)
- 5MP camera (barcode capable), WLAN, BT, optional 4G, 2m or sub-meter GPS
- Windows 7 Professional or Windows 8.1 or 10 Pro
- IP67, 1.22m drop tested to concrete (2.13m to plywood), operating temperature -34°C to 60°C, Hazardous Location (ATEX Zone 2) Compliant
- Replaceable Li-Ion Battery: 81.4Whr



Getac F110-Ex 11.6" ATEX Zone 2, Windows 10 Tablet

Fully Rugged Windows Tablet PC

- 11.6" TFT LCD HD Capacitive Display (optional dual mode with digitiser)
- Intel Core i5-6200U or i7-6500U (optional vPro) Processors, 4GB to 8GB RAM, 128GB SSD to 1TB SSD
- HD webcam, 8MP rear camera, WLAN, BT (Class 1), optional 4G, GPS, Choice of RFID, 1D/2D imager barcode reader, or choice of ports
- Windows 7 or Windows 10 Pro
- IP65, drop resistant, operating temperature -21°C to 60°C
- Li-ion dual batteries: 2,160mAh
- ATEX Zone 2/22 approval



Pad-Ex 01 11.6" ATEX Zone 2, Windows 10 Tablet

Fully Rugged yet Slim Windows Tablet PC

- 11.6" TFT LCD HD Capacitive Display (1366x768), optional 730NITS
- Intel Broadwell i5 or i7 Processors, 4GB to 16GB RAM, 128GB to 512GB SSD
- 5MP rear camera, WLAN, BT (Class 1), optional 4G, GPS, 1D/2D imager barcode reader
- Windows 7 or Windows 10 Pro
- IP65, drop resistant, operating temperature -10°C to 55°C
- Li-Ion battery: 4,130mAh or 7,800mAh
- ATEX Zone 2/22 approval

Android ATEX Certified Rugged Mobile Hardware

www.ruggedmobilesystems.co.uk



Panasonic FZ-X1-Ex & FZ-E1-Ex ATEX Zone 2 Tablets

Fully Rugged handheld tablets with voice & data capability

- Fully Rugged handheld tablet with voice & data capability
- 5" 10-point multi touch, capacitive, daylight viewable display with glove & rain modes
- FZ-E1-Ex: 2.3GHz Qualcomm Quad Core Processor
- FZ-X1-Ex: 1.7GHz Qualcomm Quad Core Processor
- 2GB RAM, 32GB eMMC Storage
- 8MP Camera, NFC WLAN, BT, GPS, 4G/3G, 1D/2D barcode reader,
- FZ-E1-Ex: Windows Embedded 8.1 Handheld
- FZ-X1-Ex: Android 4.2.2
- IP54, 1.0m drop tested, MIL-STD-810G, operating temperature -20°C to 40°C
- Li-ion battery: 6,200 mAh replaceable battery
- ATEX Ex nA nC IIB T4 Gc. Must use leather cover in ATEX Zone 2



Smart-Ex 01 ATEX Zone 1 & Smart Ex-201 Zone 2 Android Smartphones

Ultra Rugged 4.0" ATEX Zone 1/21 & Zone 2/22 Android Smartphone

- 4.0" WVGA (480x800) Gorilla Glass 2, Blanview, outdoor viewable, capacitive multi-touch display
- 1.2GHz Quad Core Processor, 1GB RAM and 16GB storage
- 8MP Rear Camera, WLAN, Bluetooth, GPS, NFC, 4G
- Android 4.4 (Google Play)
- IP68, operating temperature -20°C to 55°C
- Li-Poly Battery: 3,600mAh
- ATEX Approvals: ATEX Zone 1 & Zone 2 models



Intrinsically Safe iPad's and iPhones - XCIEL ATEX Zone 2 Rugged Cases for IOS Tablets and Smartphones

ATEX Zone 2 approved cases to enable the iPad and iPhone range of Tablets and Phones to be used in Zone 2 hazardous areas.

- Available for iPad gen 4, iPad Air and iPad mini and iPad mini Retina
- Available for iPhone 4s, 5, 5s, 6
- IP67 sealed for outdoor usage
- Includes rubber case with carry handle and harness plus screen cover flap (iPad only)
- Allows use of device buttons and camera
- Connects securely through W-Fi, 3G or 4G



Getac ZX70-Ex ATEX Zone 2 Android Tablet

Fully Rugged 7" Android Tablet with glove-enabled touch screen

- 7" IPS TFT LCD (1280x720) sunlight readable capacitive touch screen with glove on
- Intel Atom 1.44GHz Processor, 2GB to 4GB RAM, 32GB eMMC
- 8MP Camera, WLAN, Bluetooth, GPS, optional 4G LTE,
- Optional Barcode Reader, RFID/NFC combo reader, UHF RFID and RF pass-through antenna for GPS & 4G
- IP67, 1.8m drop resistant, operating temperature -21°C to 60°C
- Li-Poly Battery: 8,400 mAh (not user replaceable)
- ATEX Approvals: ATEX Zone 2 /22



Tab-Ex 01 ATEX Zone 1 & Zone 2 Android Tablets

Lightweight 8" ATEX Zone 1 & Zone 2 Android Tablet

- 8.0" TFT (1280x800) display
- 1.2GHz Quad Core Processor, 1.5GB RAM and 16GB storage, optional MicroSD
- 3MP Camera (with barcode scanner capability), WLAN, Bluetooth, NFC, optional 4G
- Android 5.1.1
- IP67, Operating temperature -20°C to 60°C
- Li-Poly Battery: 4,450mAh (up to 8 hours battery life)
- ATEX Approvals: ATEX Zone 1 & Zone 2 models



Xplore Xsplate D10 ATEX Zone 2 Android Tablet

Fully Rugged 10.1" Android 6.0 Tablet

- 10.1" WXGA IPS LED (1366 x 768) capacitive touch display with glove touch mode
- Intel Atom Quad Core 1.91GHz Processor, 4GB RAM, 64GB Storage
- RJ-45 port, 2 x USB 3.0 ports, Micro SDXC slot, Micro HDMI out
- BT (Class 2), WLAN, GPS, Optional 4G LTE
- 5MP Rear Camera, NFC, optional 1D/2D barcode reader module, HDMI-input
- Android 5.1 or 6.0 (with GMS)
- IP65, MIL-STD-810G & 461F, 1.5m drop resistance, operating temperature -34°C to 60°C,
- Li-Ion battery: 39.2 Whr battery, Optional Hot Swap 31.1Whr or 59.2 Whr External battery
- Hazardous Location ATEX Zone 2 Compliant

Hardware Accessories



Fleet Management Systems GPS Accessories



FMS1000

Telematics IoT Gateway – Fleet Management System for real-time remote diagnostics, vehicle tracking and driver performance analysis

- 1 x 10/100 Mbps Ethernet
- 3G WWAN, WLAN and GPS support
- 3x DI, 3x DO, 3x Analog in
- Rugged IP67 protection
- Back up rechargeable battery
- SMS message triggered by event
- 2 x CAN Bus 2.0B
- Driver identification support (iButton & RFID)
- Support optional USB storage as data log



Juniper Systems Geode

Sub-meter Accuracy GPS Receiver

- 1 Sub-meter accuracy – collect real time GNSS data on your existing device (open interface)
- Affordable professional accuracy. Android & Windows compatible.
- Simple to use. Lightweight (360g) & compact enough to carry all day
- All-day battery life: 5,300mAh
- Bluetooth (Class 1), Micro USB Client 2.0; Optional Serial RS232C DB-9
- Accuracy: SBAS (WAAS): <30cm Horizontal RMS
- IP68 rating, operating Temp: -20°C to 60°C



Trimble PG200

Rugged, lightweight, and compact, the Trimble PG 200 can go wherever you go.

- Sub-meter accuracy – collect real time GNSS data on your existing device (open interface)
- Affordable professional accuracy. iOS, Android & Windows compatible.
- Compact & Lightweight (187g)
- All-day battery life
- Bluetooth (Class 2)
- Accuracy: SBAS: <100cm
- Operating Temp: -20°C to 60°C
- MIL-STD-810 ruggedness with IP65 rating



Pettorway Z3 GPS Tracker

Capture real time tracking data using app on your device

- Lightweight Tracker with robust casing (30g), attaches to pets collar.
- Battery charge time 2 hours.
- Battery life 608 hours in tracking mode, but can last up to 6 days in standby mode.
- Motion sensor: when pet is inactive the product goes into standby to preserve battery life.
- Water proof up to 1m.
- Requires yearly fee for data usage.

Bluetooth and WIFI Barcode/RFID Reader & Printers



Zebra RW Series Mobile Printers

Designed for the Road Warrior, the Zebra RW series of mobile printers are ideal for printing delivery receipts and invoices on the go.

- User-friendly, Direct Thermal printers with 2" (RW220) or 4" (RW420) print width
- Choice of connectivity: RS232, WLAN, BT or dual radio
- Printing speed: 76.2 mm per Second, resolution 203 dpi
- 8MB Flash, 16MB RAM.
- Rugged design IP54, 1.8m drop tested, operating temperature -20°C - 55°C



Brother RJ Series Mobile Printers

Our RJ series mobile printers are fast, compact and very rugged, perfect for busy mobile workers out in the field.

- Direct Thermal printer with, maximum 104mm print width and 3000mm length
- Choice of connectivity: RS232, USB, WLAN
- Weight - 610g (exc Battery).
- Printing speed: 127mm per Second, resolution: 203dpi
- 32MB of RAM, 32GB Flash
- IP54, 1.8m drop tested
- Brother PJ-6XX & 7XX series A4 printers also available



Socket Mobile CHS Series 1D/2D Barcode Scanners

The Socket Bluetooth Cordless Hand Scanner (CHS) Series 7 brings industrial-class barcode scanning into a portable, pocket-sized form factor.

- Dimension - 132x45.1x37.9mm
- Weight - 68g.
- One Lithium ion rechargeable battery, 10 hours battery life on single charge.
- Scanner type: High performance for scanning 2D and 1D barcodes, printed or on-screen.
- Compatibility: Apple iPod touch, iPhone, iPad and MAC OS, Windows Mobile 7, Vista, XP



Tectus MultiPen Innovative RFID & NFC Mobile Reader

Reads UIDs of passive RFID tags with different Frequency range combinations

- Reads LF 125kHz; LF 134.2kHz +HDX; HF & NFC 13.56MHz; and UHF 868MHz
- 1 to 3 cm Reading distance
- 4 rows OLED-Display
- Tone and Vibration Feedback
- 1000 UIDs read / 2000 Bluetooth read
- Bluetooth, USB, HID (Human Interface Device - keyboard wedge function sets the UID after reading directly at the place of cursor position in Microsoft Word™, Excel™ or similar software tools on Android™)
- Real-Time Clock
- ATEX certified version
- IP 54 certified. Temperature : 0°C to 60°C
- CE: APOLLO-MP-LF / HF

Hardware Accessories

PDA's with Integral Printers



CASIO IT-9000

All-In-One handheld printer terminal

- 3,7" TFT LCD (640 x 480)
- Printing speed up to 28 lines per sec
- WAN GPS for Outdoor use
- Built-In Magnetic Card reader and 2D Barcode reader, NFC, RFID
- Variety of expansion features as a USB Port, SD Card slot, BT
- 2MP with AF
- Windows Embedded Handheld 6.5
- IP54, 1,5m drop tested
- Operating temperature -20°C to 50°C
- Li-ion battery pack for approx. 20h of use

Bluebird BIP-1500

Rugged All-in-One Handheld Computer with integral printer

- 3.5" QVGA or VGA Display
- Choice of 2" or 3" print width
- 806MHz PXA Processor, 256MB RAM, 512MB to 1GB ROM
- 3MP camera with autofocus, WLAN, BT, 3.8G, A-GPS, 1D or 2D Barcode reader
- Windows Embedded, Handheld 6.5
- IP54, 1.5m drop tested
- Li-ion battery: 4,000mAh or 6,000mAh

Hands Free Carrying Solutions



RUGGED MOBILE Systems source unique hands-free solutions that allow for use of mobile hardware over long periods on site or where users need their hands-free for another task.

We provide solutions for small handheld computing devices using the Sacci Belt Flip-up, and larger Tablet and Notebook PC's using the Sacci Hook Shoulder Harness. Hands free solutions reduce carry strain, allow hands free usage, offer comfortable ergonomic designs and are ideal for long term usage.

RUGGED MOBILE Systems can assist with production of custom made holders and already offer holders for the following units:

- Panasonic Notebooks, Panasonic FZ-M1, FZ-B2, FZ-G1 Tablets;
- Getac T800 & F110 Tablets and V110 Notebook
- Xplore XC6 Tablet
- Trimble Ranger 3, Nomad and Recon PDA's

We can arrange custom build for your device.

RUGGED MOBILE Systems have moved!

In October 2016, **RUGGED MOBILE Systems** relocated from Congleton, Cheshire to new larger offices near Whitchurch, Shropshire. We are now in offices at Park View Business Centre located on the edge of the beautiful Combermere Abbey Estate. We have lots of parking for visitors. If visiting us please use intercom by reception door to contact us.

Our new address:

RUGGED MOBILE Systems Ltd, Park View Business Centre, Combermere, Whitchurch, Shropshire. SY13 4AL



RUGGED MOBILE Systems are now ISO 9001 Registered

From 8th May 2017, the quality management systems of **RUGGED MOBILE Systems** have been assessed and approved by QMS International Ltd to the following quality management systems, standards, and guidelines:- **ISO 9001 : 2015**

The approved quality management systems apply to the 'Supply of rugged mobile computing hardware and accessories' and are valid until May 2022.

> ISO 9001 is recognised worldwide as the international benchmark for quality within an organisation.

> By achieving our ISO 9001 certification, **RUGGED MOBILE Systems** are able to demonstrate to customers and suppliers that the systems we have in place meet the high standards set out by the International Organisation for Standardisation (ISO).

> To gain the ISO 9001 certification, **RUGGED MOBILE Systems** had to demonstrate our dedication and commitment to meeting our customers' needs, operating efficient management processes, and delivering consistent, good quality products and services.

> Each year, an external Audit is carried out by a third party to ensure our systems are maintained and any non-conformances are noted for correction.

Managing Director of **RUGGED MOBILE Systems**, Ges Jones, said:

"We plan to use the ISO 9001 to demonstrate to our clients our commitment to quality in all aspects of our business, from service, to supply to support of our staff and to allow for continuous assessment and improvement of our procedures. RUGGED MOBILE Systems, now in our 10th year, have been committed to quality from the start and by following the ISO 9001 principles we can ensure this continues"

If you would like to **check the validity of our ISO 9001 certification** or find out more about the ISO 9001 principles we follow please get in touch today, we would be delighted to speak with you.

2007 to 2017: What's Changed in Mobile Hardware over the last 10 Years?

We've seen huge changes in the mobile computing hardware market from 2007 to 2017, just a handful are listed below:

>> Processors continue to become more efficient and less battery draining, and more powerful for ever more taxing applications. Each device relaunch has brought with it growth in storage, memory and communications capability.

>> The interest in Android operating systems has grown year on year and confidence in the security of Android is continuing to develop, supported by increasingly sophisticated Mobile Device Management tools. This has eroded the previous dominance of Windows based products, and created a more competitive environment.

>> Over the years we've seen a move away from rugged PDAs and handhelds with keypads toward larger screen Smartphone style devices, or to compact tablets, where on-screen keyboards are utilised instead of keypads. User acceptance of this change has been accelerated through the daily private use of sophisticated personal phones and tablets.

>> Rugged tablets have become sleeker and lighter and in doing so support fewer fitted port options (such as RS232, RJ45 or VGA), and instead several offer a configurable port to allow choice from a selection of options.

>> We've also witnessed leaps in display technology. The move from Resistive to Capacitive touch has provided many application advantages, but often have needed an additional digitiser layer to be included to enable users to experience reliable touch capability when used with water on the screens. The advent of capacitive displays with wet touch features is progressing, but still not universal.

>> Increases in battery capacities plus the option for hot swap batteries or Snap-On extended batteries - allowing users to work away from power sources for longer periods.

>> We've also seen growth in number of ATEX Zone 1 and Zone 2 approved PDAs and tablet PCs and the long awaited fall in the cost of these devices. With more affordable ATEX mobile computing options available, users within the oil and gas, pharmaceutical and food

industries are now looking to replace paper based systems with electronic data capture devices.

>> There have also been significant developments in in-vehicle PCs platforms, with massive increases in mobile computing performance, delivering support for advanced technology for autonomous vehicles, video analytics, vehicle tracking and vehicle and driver performance monitoring, passenger security using Power over Ethernet cameras, to mention but a few.

Going forward we envisage growth in interconnectivity and internet networking of systems with the mobile devices we offer. Sensors within industrial, manufacturing, asset tracking scenarios communicating via Bluetooth, Wi-Fi, or RFID readers for example with robust tablets, carried either by users or installed into vehicles or fixed points. Often termed the 'Internet of Things' we see this approach already adopted by companies looking to remotely manage, monitor, control or maintain their assets and sites.

Meet us at an Exhibition!

We attend several shows across the UK, each year, to allow our clients and partners to get hands on with the mobile hardware we offer.



EVENT	WHAT TO EXPECT:	WHERE?	WHEN?
LAMMA 2017	LAMMA is the UK's leading Farm Machinery, Equipment & Services Show	Hall 7, Stand 722, East of England Showground, Peterborough	18/19 January 2017
HazardEx 2017	HazardEx International Conference and Exhibition for hazardous area and process safety specialists.	Stand 16, Holiday Inn Runcorn, Cheshire	2/3 March 2017
GeoBusiness Show 2017	Showcasing 200 of the world's leading suppliers of geospatial technology and service providers. Meet face-to-face with exhibitors displaying the latest in the geospatial industry including GIS data capture, laser scanning, photogrammetry, UAV's, remote sensing, GPS and satellite positioning, cartography GIS and mapping based applications, 3D modelling and visualisation and land, building, utility, rail, hydrographic surveying equipment and services.	Stand F3, Business Design Centre, Islington, London	23/24 May 2017
Field Service Expo 2017	Europe's only event dedicated to the service management and field service industries. Showcasing the latest technologies and practices from industry experts all under one roof. As part of the Protection & Management Series, you'll have not only access to the Field Service Management Expo, but four other shows as well, including; Firex International, IFSEC International, Facilities Show, Safety & Health Expo.	Stand P750, ExCel Centre, London	20/22 June 2017

If you can't make an exhibition but would like to trial any of our hardware please call us on **0845 6520816** to arrange either for a meeting or for demonstration hardware to be sent to you.

RUGGED MOBILE SYSTEMS



TOUGH TECHNOLOGY FOR TOUGH ENVIRONMENTS

CELEBRATING 10 YEARS IN 2017!



RUGGED MOBILE SYSTEMS Ltd

Park View Business Park • Combermere • Whitchurch • Shropshire • SY13 4AL
T: 0845 652 0816 • F: 0845 652 0817 • E: sales@rm-systems.co.uk

QMS[®]
ISO 9001
REGISTERED

