

Gladius GT-500

5" Rugged Android™ Handheld Device with LTE solution



Features

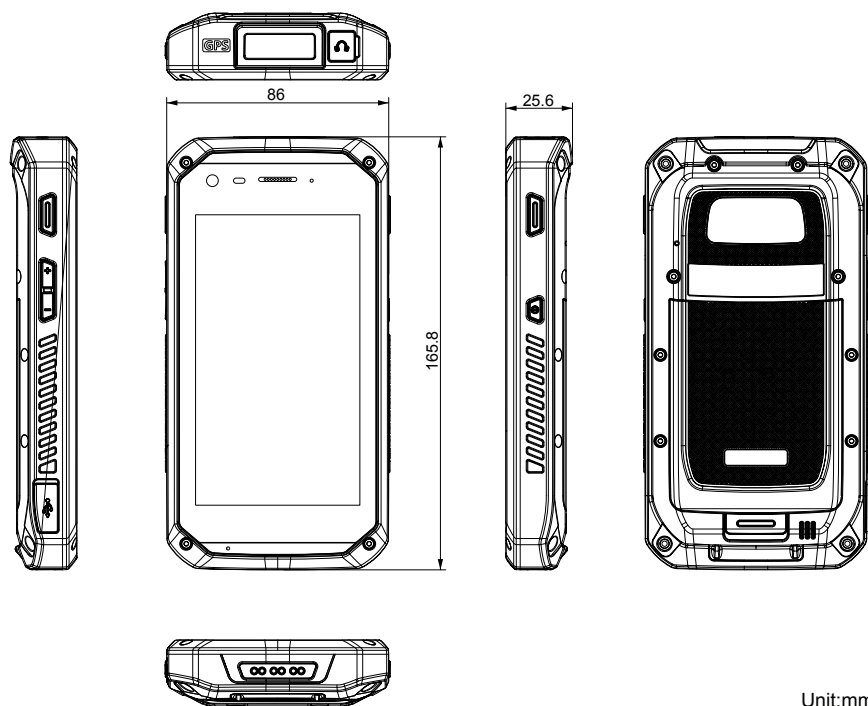
- Support Android 7.0
- Quad-core ARM Cortex-A53 1.3GHz
- Multiple Connectivity including WLAN, WWAN, Bluetooth, NFC and 2G/3G/LTE
- WorldMode modem capability (supporting FDD/TDD-LTE, WCDMA, CDMA2000 1xEV-DO and GSM/GPRS/EDGE)
- IP67 rated water and dust resistance
- Drop proof: up to 1.5m
- Accelerometer, magnetometer, gyroscope, light sensor, GPS & barometer
- Built-in 1D/2D barcode reader

System	
CPU	Quad Core ARM Cortex-A53 1.3GHz
OS	Android 7.0
Memory	2GB LPDDR2
Storage	16 GB eMMC
Audio	1 x built-in microphone
	1 x built-in speaker (0.5W)
	1 x 3.5mm stereo headphone/microphone combo jack
	FM radio
Peripherals and Devices	
Camera	Front: 2.0 megapixel camera
	Rear: 13.0 megapixel camera with Auto-Focus and Flashlight
Sensor	Magnetometer (M-Sensor/E-Compass)
	Accelerometer (G-sensor)
	Gyroscope
	Barometer
	Proximity sensor
	Ambient light sensor
NFC	Yes
WLAN	Integrated Wi-Fi 802.11a/b/g/n
Bluetooth	Integrated Bluetooth 4.1 (BLE, HS compliant)
	2G GSM/GPRS/EDGE (Band 850/900/1800/1900) 3G WCDMA (Band 1,2,5,8) 3G CDMA2000 (BC0/BC1)
WWAN	4G FDD+TDD (Band1,3,5,7,8,20,38,39,40,41)
	4G DRX (Band1,3,5,7,8,20,38,39,40,41)
	4G FDD+TDD (Band1,2,3,4,5,7,8,12,13,17)
	4G DRX(Band1,2,3,4,5,7,8,12,13,17)
Navigation	GPS/Beidou
	GPS/Glonass (optional)
Barcode Scanner	1D/2D barcode reader with physical trigger buttons
I/O Interface	
USB Port	1 x Micro USB 2.0 port (OTG compatible)
SD Slot	1 x microSD card slot (up to 32G)
SIM Socket	1 x micro-SIM (3FF) socket supporting 2G/3G/LTE
	1 x micro-SIM (3FF) socket supporting 2G only

LCD Display	
Size/Type	5" TFT LCD
Resolution	720(W) x 1280(H)
Brightness	500 nits
Touch Screen	
Type	5-Point Projected Capacitive Multi-Touch screen
Power Supply	
Battery Type	Lithium-ion rechargeable battery
	Customer replaceable (for maintenance)
Battery Capacity	4800mAh
Adapter Input	AC100~240C, 50~60 Hz
Adapter Output	5V/2A (10W)
Mechanical & Environmental	
Ingress Protection	IP67, Up to 1.5m drop resistance.
Operating Temp.	-15°C ~ 55°C (5°F ~ 131°F)
Storage Temp.	-20°C ~ 60°C (-4°F ~ 140°F)
Operating Humidity	5~95% RH
Dimensions (W x H x D)	86 x 165.8 x 25.6mm (3.39" x 6.53 x 1.01")
Weight	< 385g (0.85lb) (with battery)
Ordering Information	
GT-500	5" Android™ Rugged Handheld Device with Quad-core Processor and Front & Rear Camera
GT-500-2D	5" Android™ Rugged Handheld Device with Quad-core Processor, Front & Rear Camera and 1D/2D Barcode Scanner



Dimensions



Standard Accessories

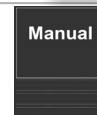
Micro USB Cable



Rechargeable Li-ion battery pack (pre-installed)



User Manual



Optional Accessories

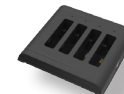
Power Adapter Universal power adapter, 5V/2A



Hand Strap 165(L) x 40(W)mm handstrap



Battery Charger 4-in-1 Battery Charger



Cradle Desktop Cradle



Pistol Grip Pistol Grip



Pistol Grip Pistol Grip with UHF RFID Scanner

