

RAM Module

Use RAM modules that comply with the specifications ([➔ Specifications](#)). Using any other module may cause malfunction or result in computer failure.

IMPORTANT



- Use recommended RAM module products. Do not use non-recommended RAM modules. Non-recommended RAM modules may not operate properly, and may cause damage to your computer.
- RAM modules are extremely sensitive to static electricity and can be affected even by static electricity from the human body. When inserting and removing RAM modules, do not touch the terminals or internal components, and do not allow foreign particles to enter the slots. Doing so may cause damage, fire, or electric shock.

Inserting the RAM Module

1. Turn off the computer.

- Do not use sleep or hibernation.

Perform the following steps to turn off the computer.

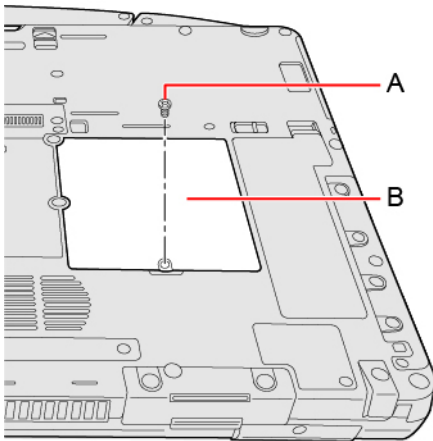
1. Click  (Start) -  (Settings) - [Update & Security] - [Recovery].
2. Click [Restart now] under "Advanced startup".
3. Click [Turn off your PC].

2. Disconnect the AC adaptor, remove the battery pack. ([➔ Replacing the Battery Pack](#))

<When using second battery pack>

- Remove the second battery pack. ([➔ Replacing the Battery Pack](#))

3. Remove the screw (A) and the cover (B) on the bottom of the computer.



NOTE

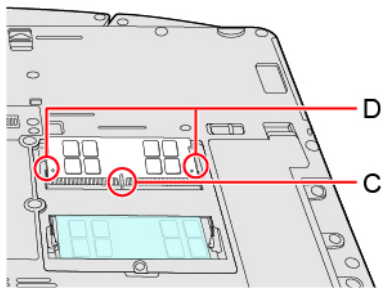
- Some illustrations are simplified to help your understanding and may look different from the actual unit.

4. Insert the RAM module.

IMPORTANT

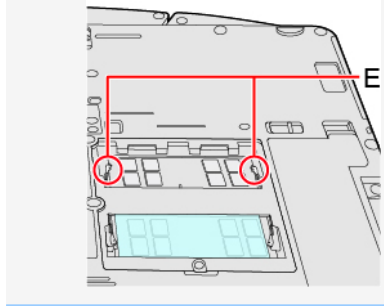
- The RAM module cannot be replaced.

1. Align the cutout (C) with the projection, and tilt the RAM module slightly and insert it in the slot.
2. Press down the RAM module so that the right and left hooks (D) are locked.

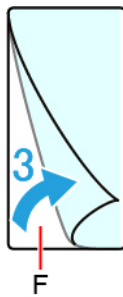


NOTE

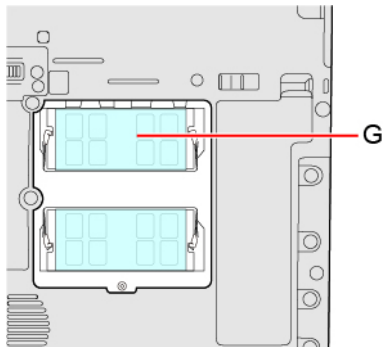
- Confirm that the RAM module is fixed with the hooks (E) as shown below.



3. Remove the release paper (F) of the sheet supplied with the recommended RAM module.



4. Firmly attach the RAM module and the seal (G).



5. **Set the cover, screw and battery pack.**

Use the PH 1 (PH #1) screwdriver.

The screw used is 1.

Recommended tightening torque

0.45 N•m ± 0.05 N•m (4.5 kgf•cm ± 0.5 kgf•cm)

IMPORTANT

- Set the cover and battery pack correctly so that they do not fall when you carry the computer.

NOTE

- If it is hard to insert or to press down the RAM module, do not try forcibly but check the module's direction.
- Use the appropriate screwdriver so as not to strip the thread of screw.
- If the RAM module is recognized correctly, the total size of the main unit memory and RAM module memory is displayed on the [\[Information Menu\]](#) of the Setup Utility.
If the RAM module is not recognized, power off the computer and insert it again.